



CONFINDUSTRIA  
Piemonte

# Indagine Congiunturale

## III trimestre 2013

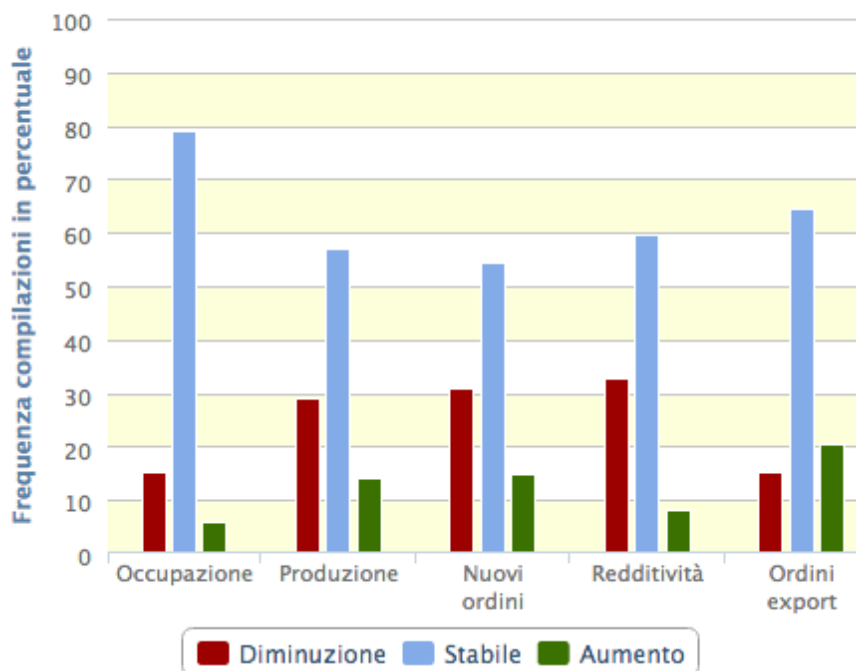




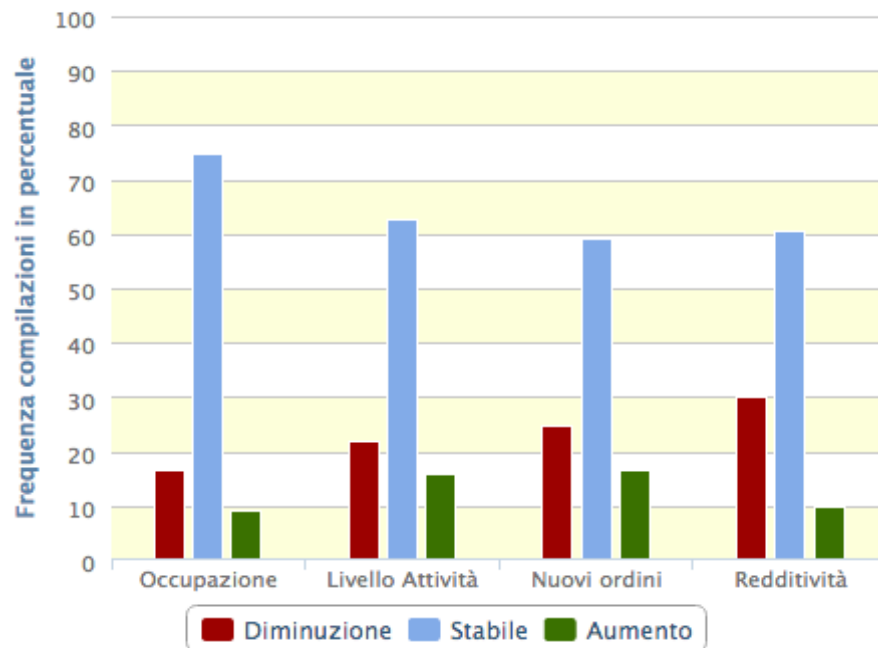
# Previsioni

Campione dei rispondenti	
INDUSTRIA	SERVIZI
1.080	252

Previsioni trimestrali  
PIEMONTE - INDUSTRIA



Previsioni trimestrali  
PIEMONTE - SERVIZI





# Previsioni - saldo

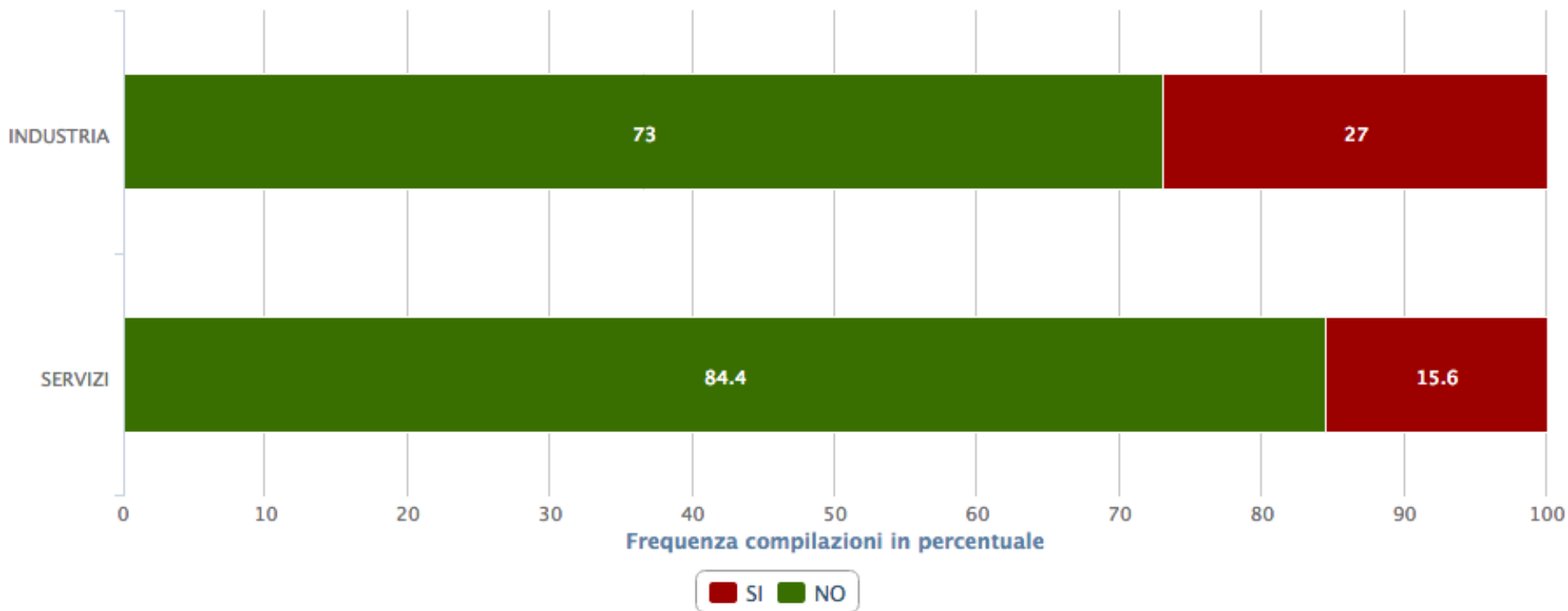
		INDUSTRIA		SERVIZI	
	Occupazione	-9,4%		-7,6%	
	Produzione	-14,8%		-6,1%	
	Nuovi Ordini	-16,0%		-8,4%	
	Redditività	-24,4%		-20,2%	
	Ordini Export	+5,3			





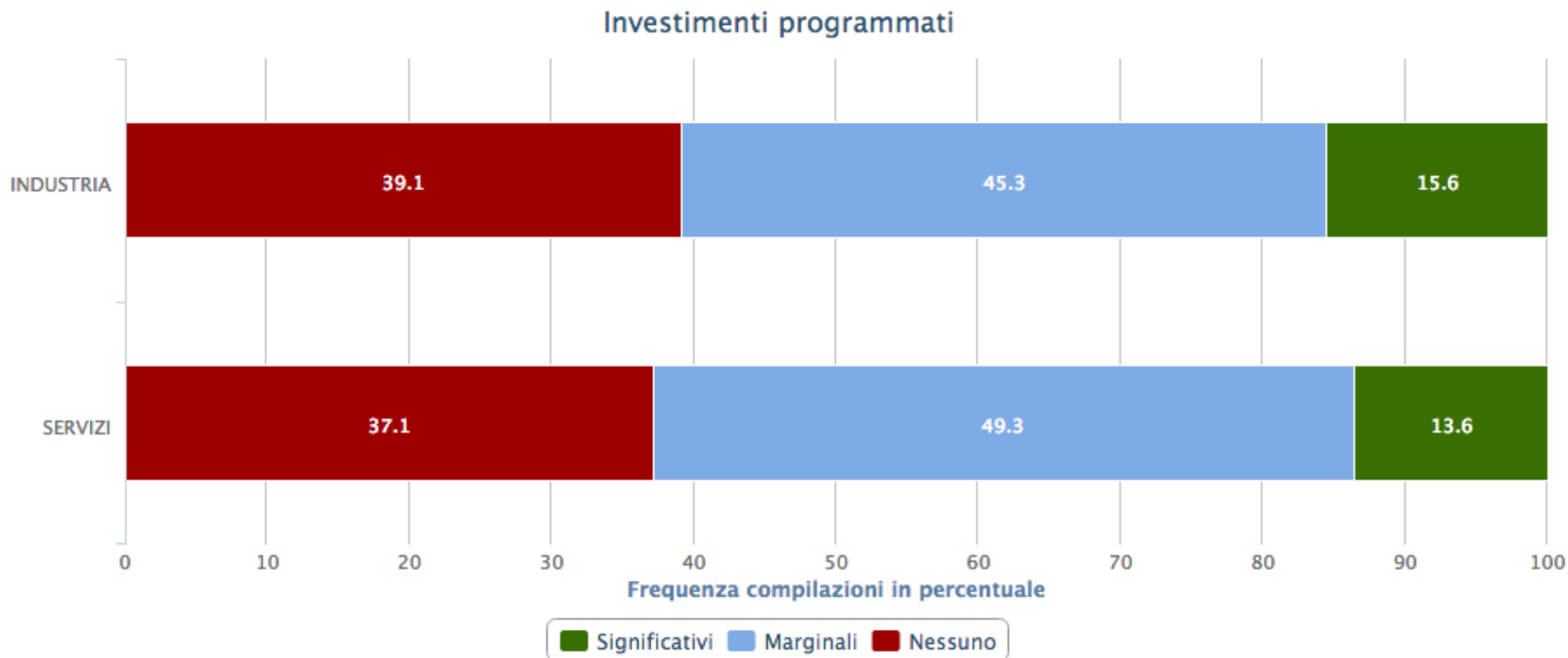
# Cassa integrazione

Previsioni ricorso cassa integrazione





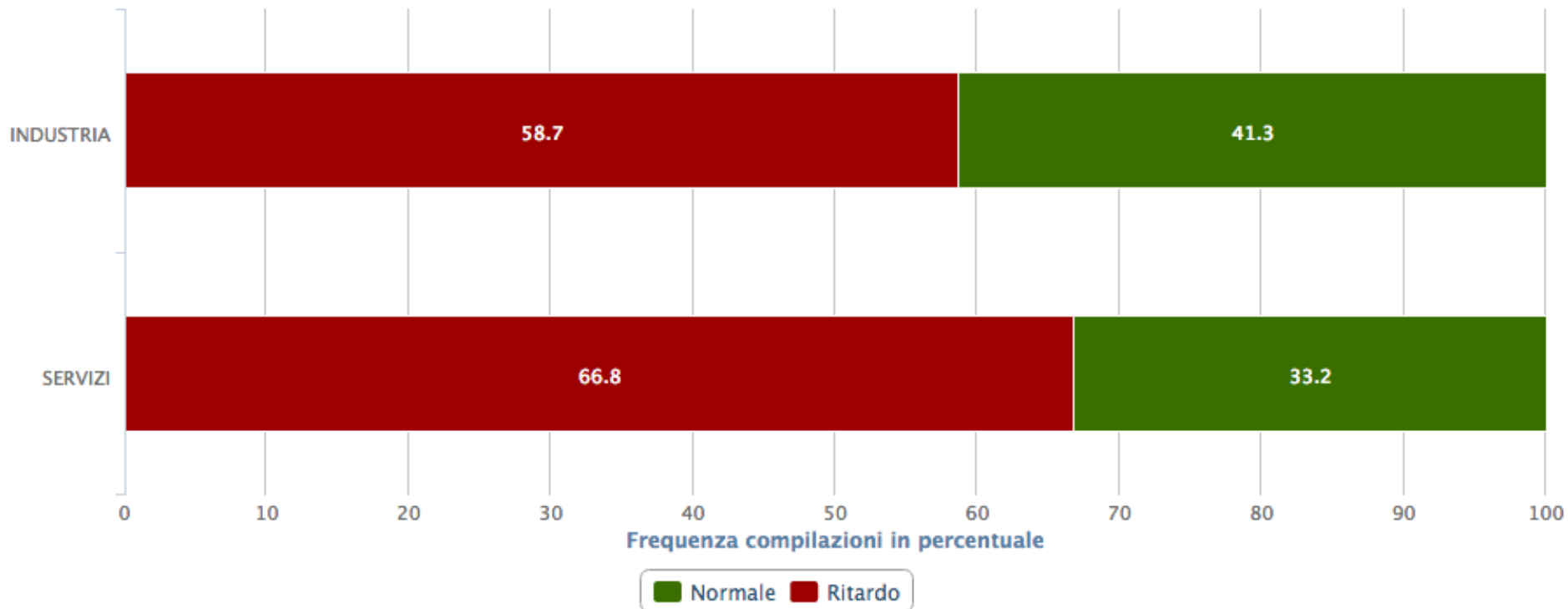
# Investimenti programmati





# Andamento incassi

Andamento degli incassi





# Media pagamenti - Industria

Media pagamenti clienti  
PIEMONTE - INDUSTRIA



Media pagamenti P.A.  
PIEMONTE - INDUSTRIA



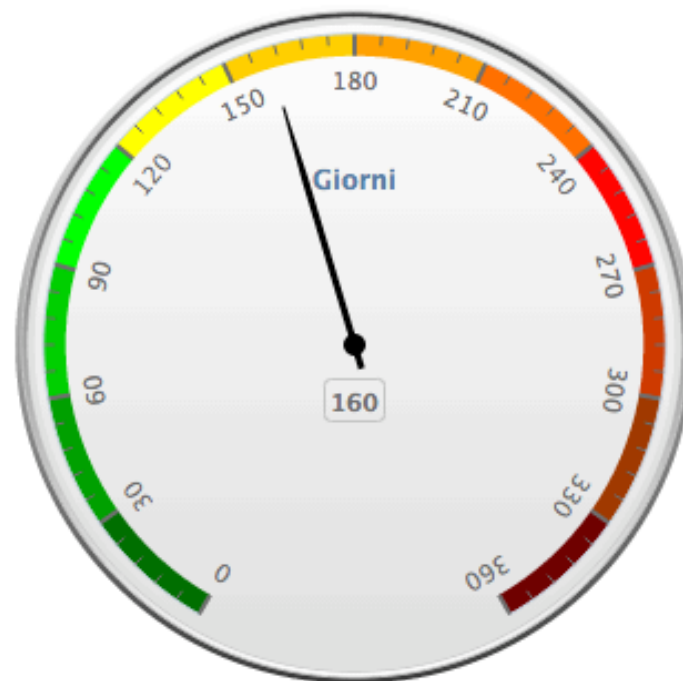


# Media pagamenti - Servizi

Media pagamenti clienti  
PIEMONTE - SERVIZI



Media pagamenti P.A.  
PIEMONTE - SERVIZI

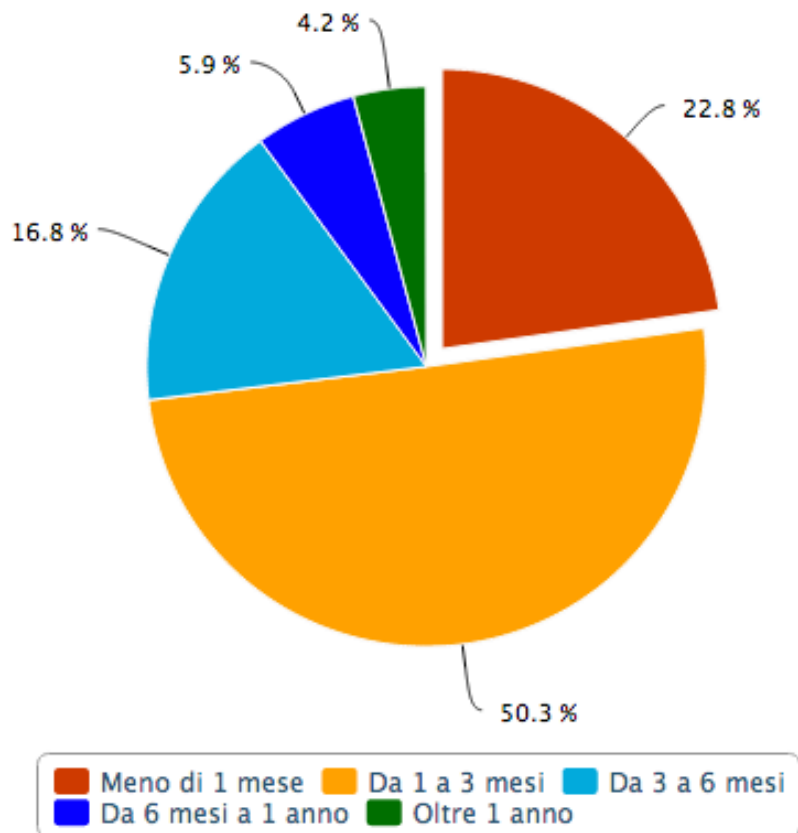




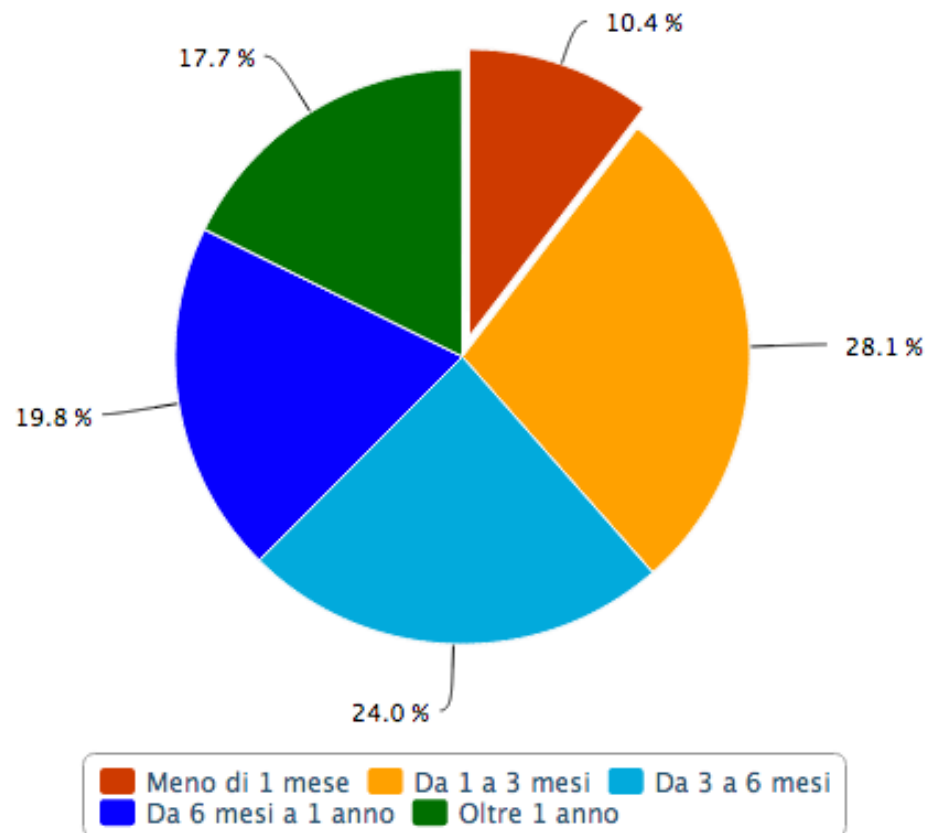


# Carnet ordini

Carnet Ordini  
INDUSTRIA



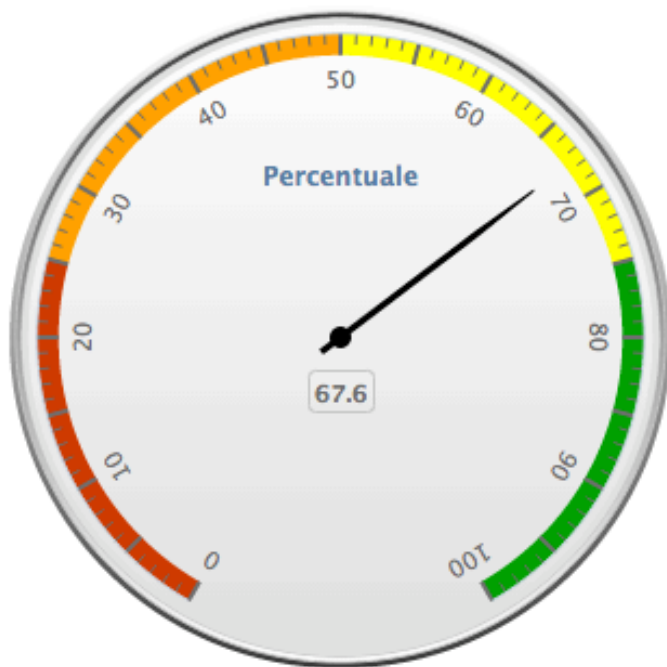
Carnet Ordini  
SERVIZI





# Utilizzo impianti/risorse

Utilizzo impianti  
PIEMONTE - INDUSTRIA



Utilizzo risorse  
PIEMONTE - SERVIZI

