



CONFINDUSTRIA  
Piemonte

# Indagine Congiunturale

## Il trimestre 2014

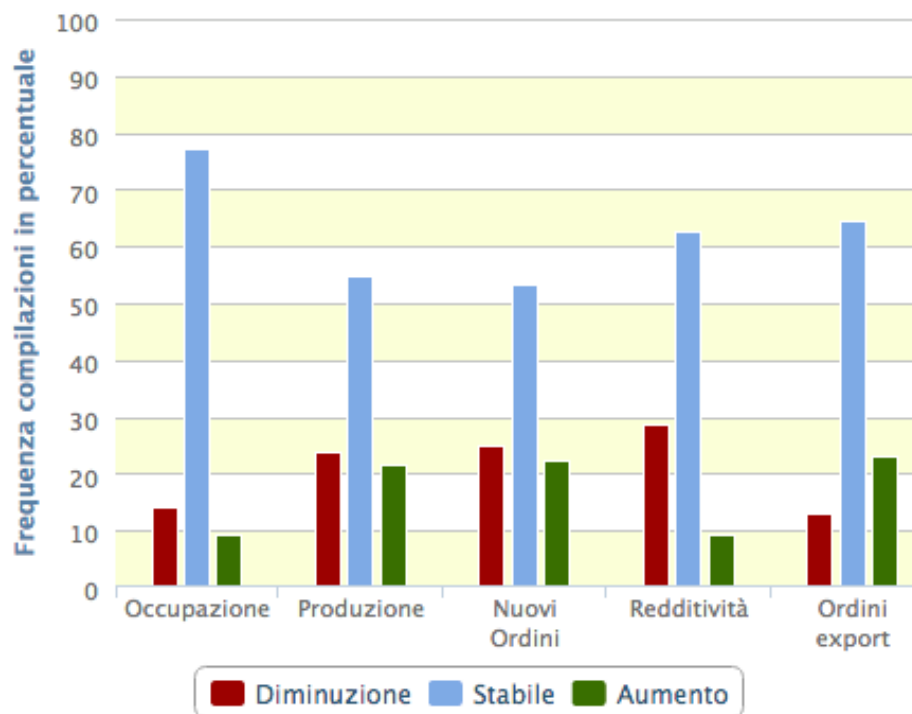




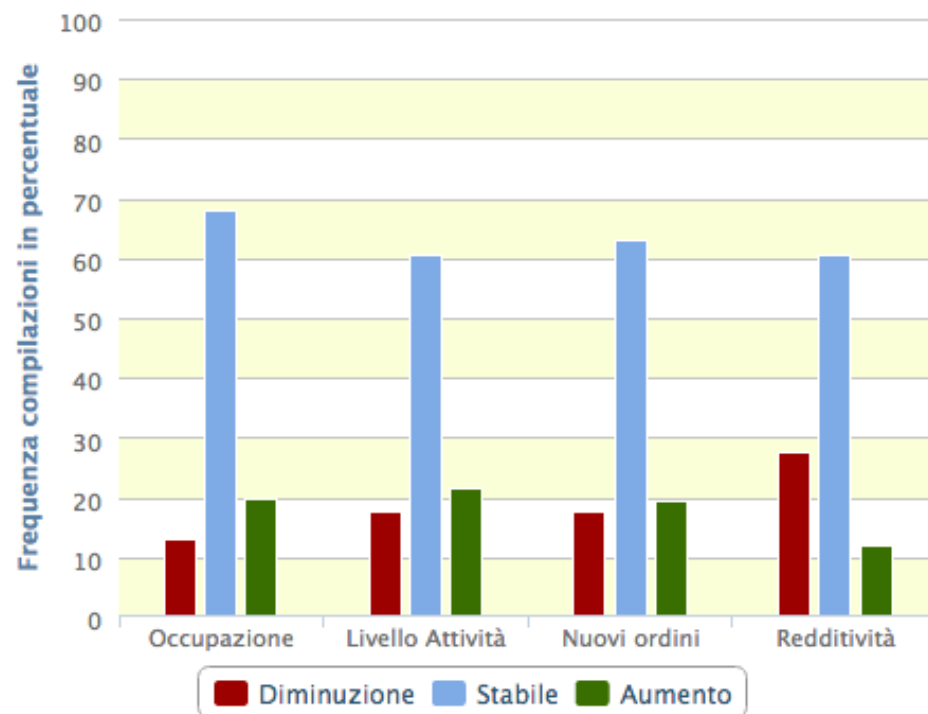
# Previsioni

Campione dei rispondenti	
INDUSTRIA	SERVIZI
1.004	300

Previsioni trimestrali  
PIEMONTE - INDUSTRIA



Previsioni trimestrali  
PIEMONTE - SERVIZI





# Previsioni - saldo

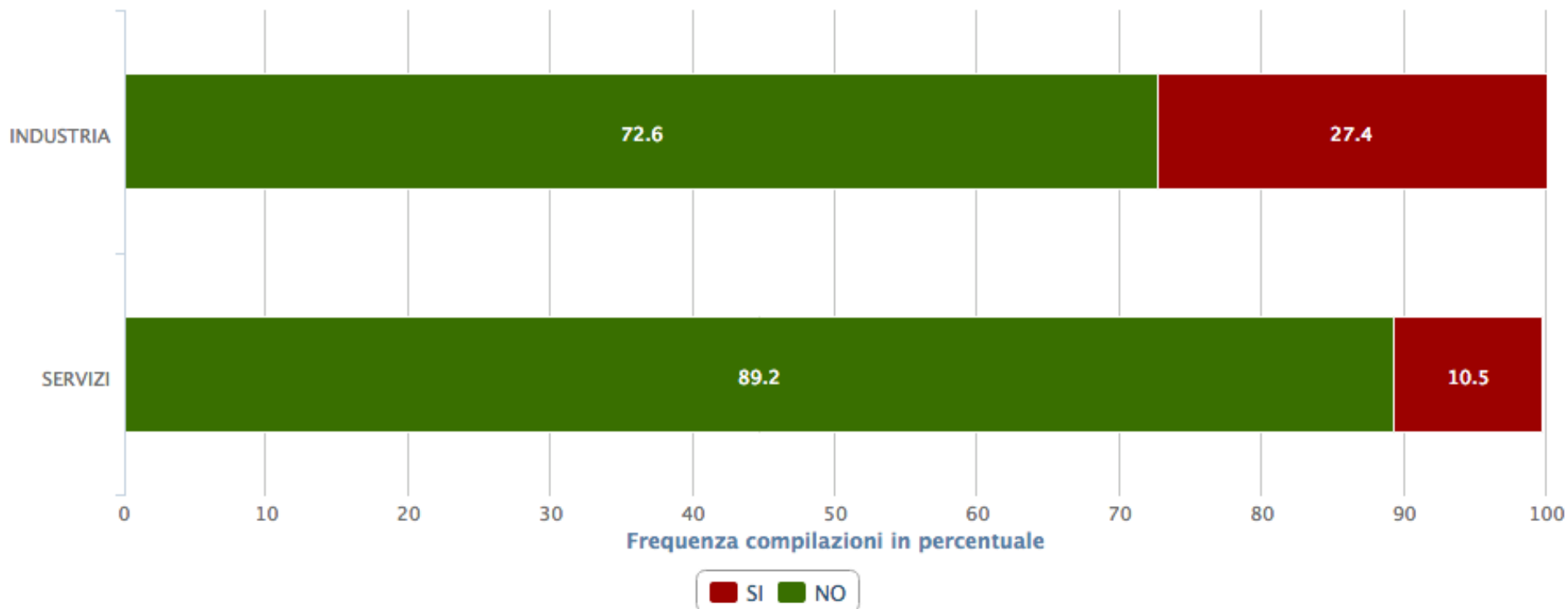
		INDUSTRIA		SERVIZI	
	Occupazione	-4,5%		+6,7%	
	Produzione	-2,0%		+3,7%	
	Nuovi Ordini	-2,9%		+1,7%	
	Redditività	-19,7%		-15,8%	
	Ordini Export	+10,0%			





# Cassa integrazione

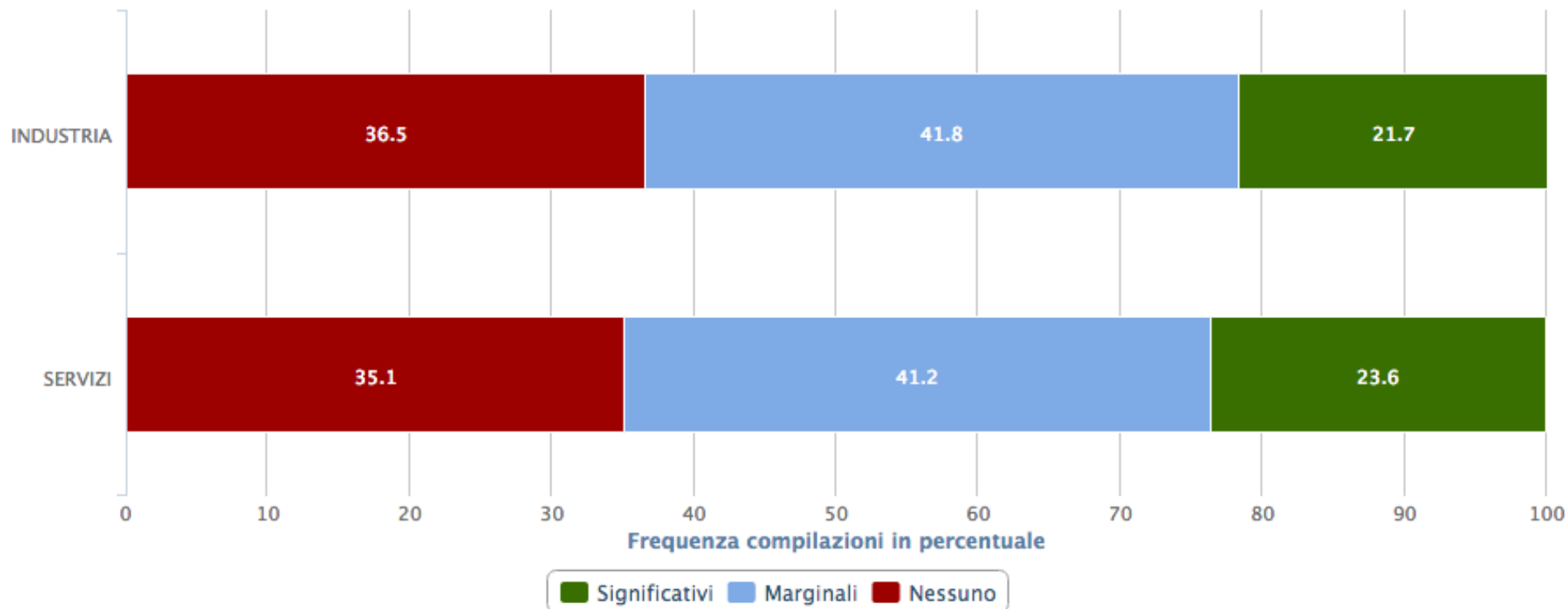
Previsioni ricorso cassa integrazione





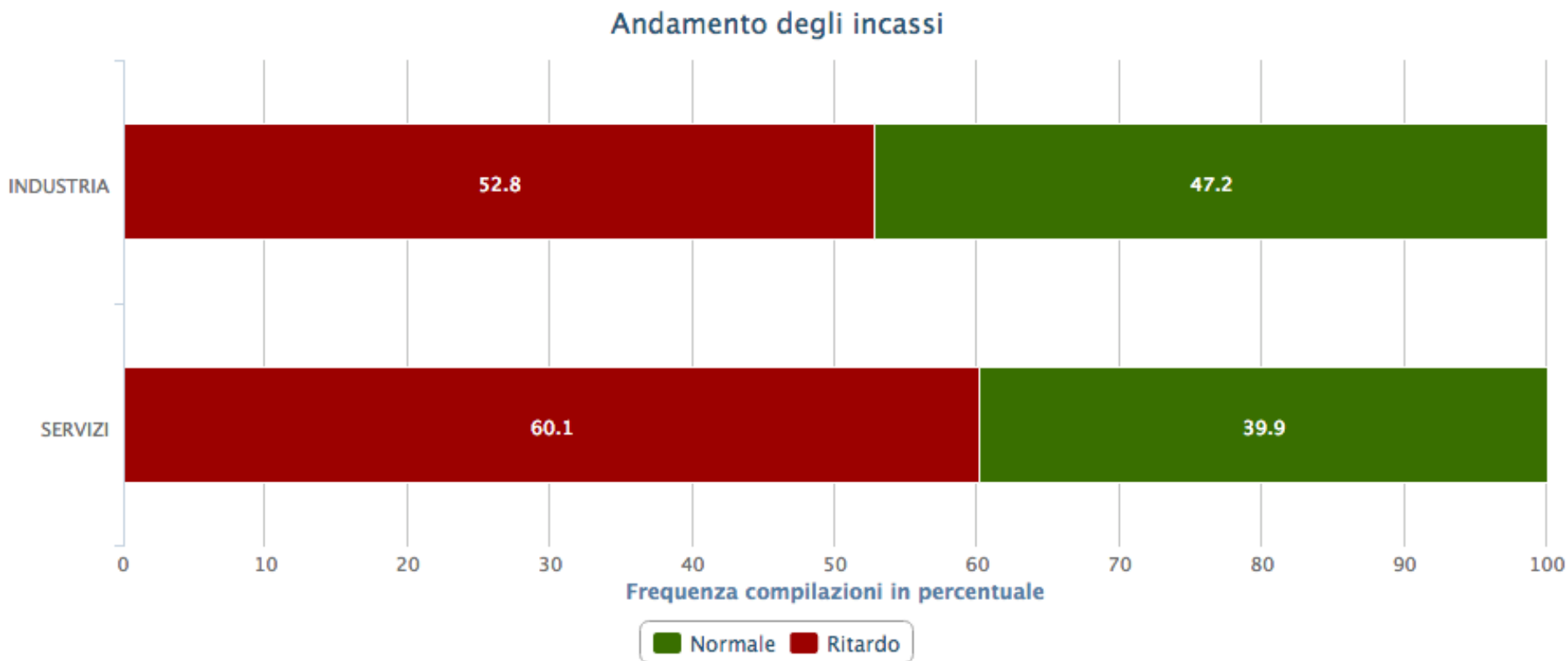
# Investimenti programmati

Investimenti programmati





# Andamento incassi





# Media pagamenti - Industria

Media pagamenti clienti  
PIEMONTE - INDUSTRIA



Media pagamenti P.A.  
PIEMONTE - INDUSTRIA



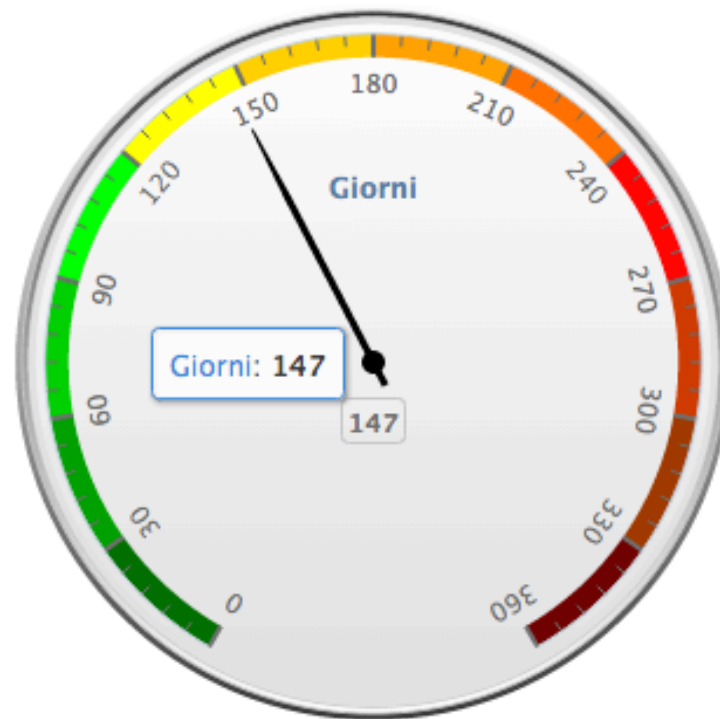


# Media pagamenti - Servizi

Media pagamenti clienti  
PIEMONTE - SERVIZI



Media pagamenti P.A.  
PIEMONTE - SERVIZI

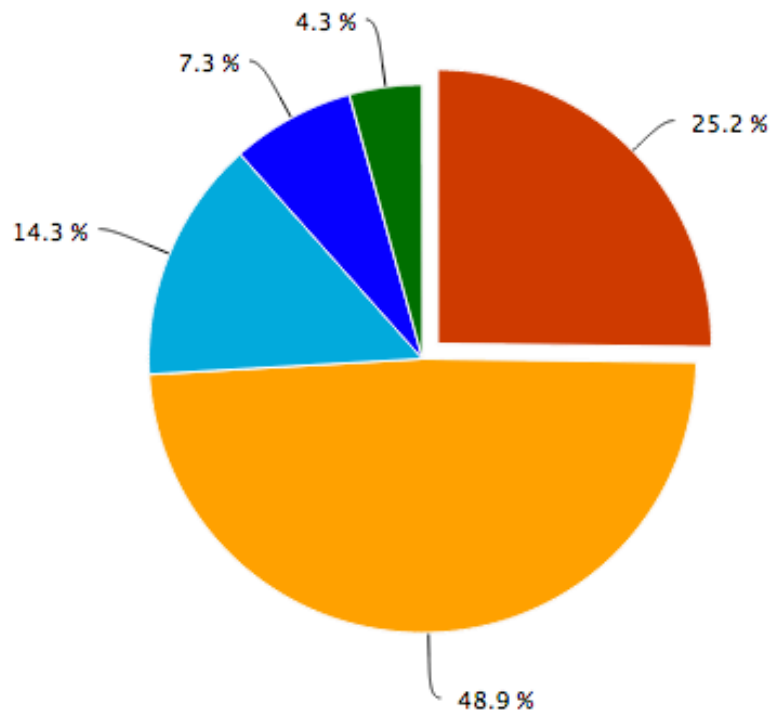






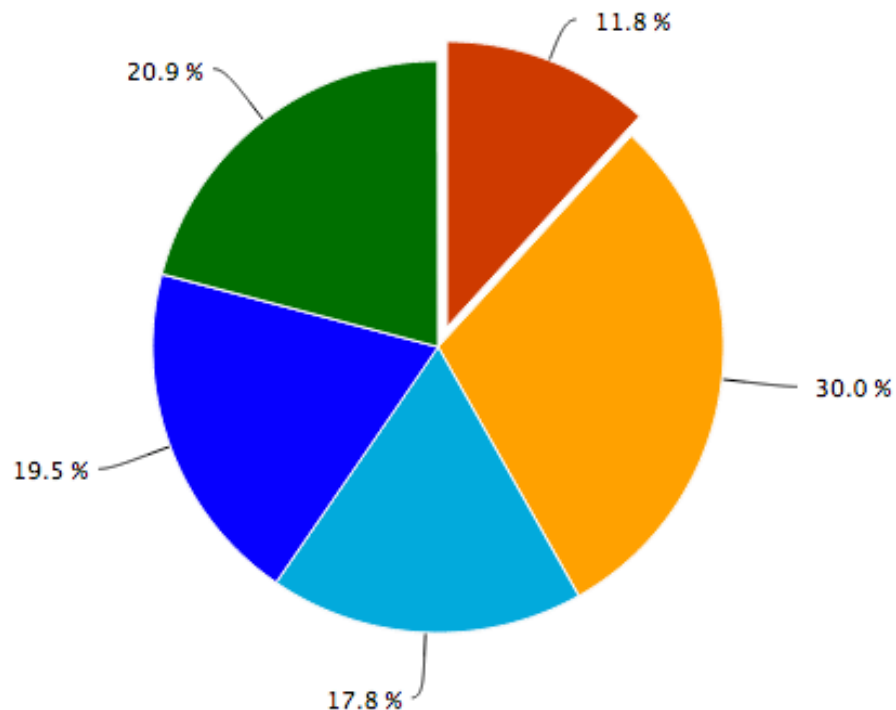
# Carnet ordini

## Carnet Ordini INDUSTRIA



Meno di 1 mese   Da 1 a 3 mesi   Da 3 a 6 mesi  
Da 6 mesi a 1 anno   Oltre 1 anno

## Carnet Ordini SERVIZI



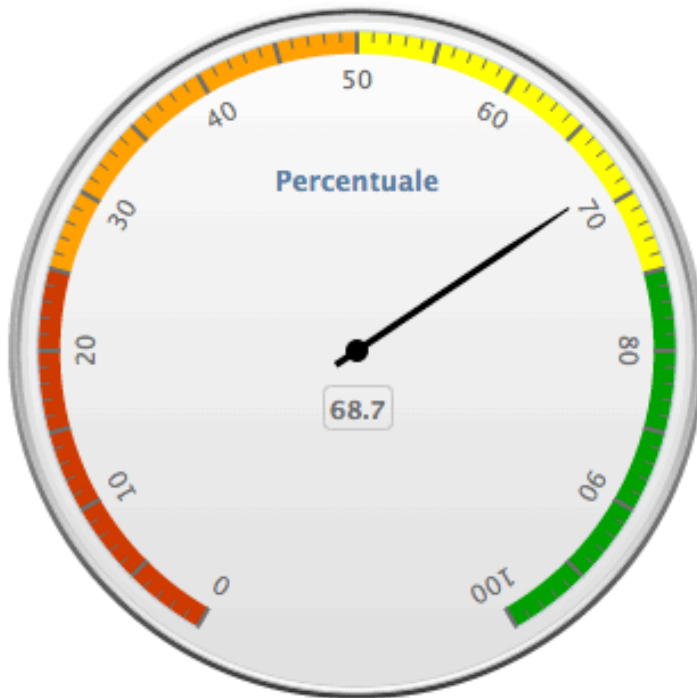
Meno di 1 mese   Da 1 a 3 mesi   Da 3 a 6 mesi  
Da 6 mesi a 1 anno   Oltre 1 anno



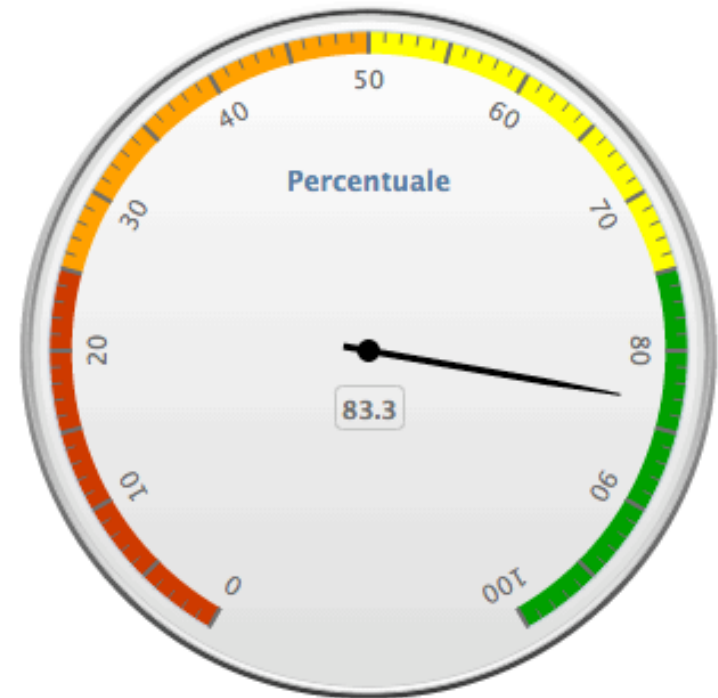


# Utilizzo impianti/risorse

Utilizzo impianti  
PIEMONTE - INDUSTRIA



Utilizzo risorse  
PIEMONTE - SERVIZI





# Consuntivo 2013

## CONSUNTIVO 2013 IN RAPPORTO AL 2012

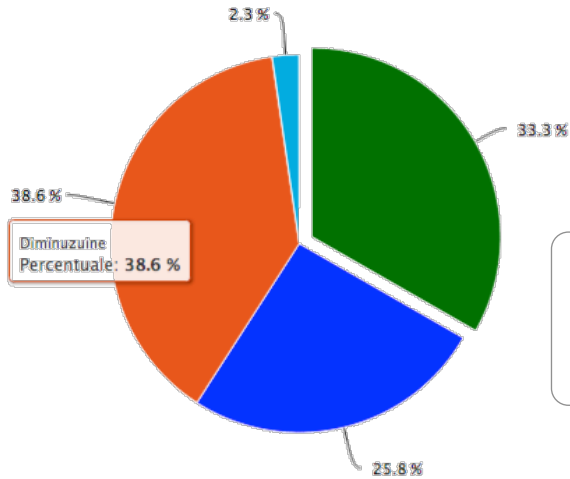
<b>SALDO</b>	<b>INDUSTRIA</b>	<b>SERVIZI</b>
<b>Consuntivo fatturato 2013/2012</b>	- 5,3	- 2,0
<b>Consuntivo indebitamento 2013/2012</b>	- 0,5	+ 30,6
<b>Consuntivo risultato economico 2013/2012</b>	+ 27,8	- 2,1
<b>Consuntivo investimenti 2013/2012</b>	- 13,5	- 11,3



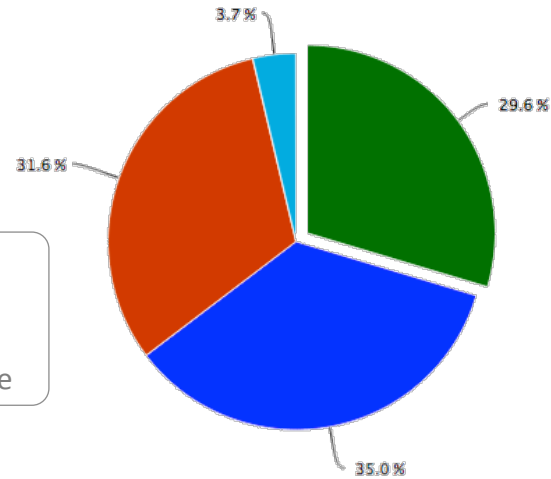


# Consuntivo 2013 - dettaglio

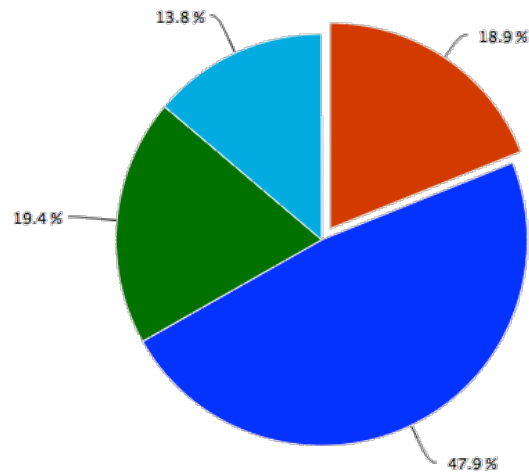
Fatturato 2013/2012  
INDUSTRIA



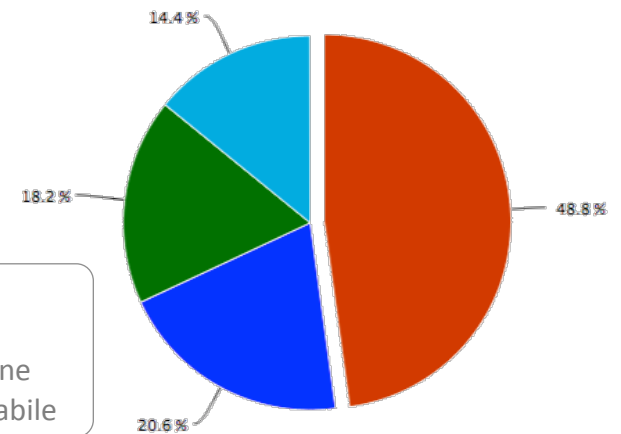
Fatturato 2013/2012  
SERVIZI



Indebitamento 2013/2012  
INDUSTRIA



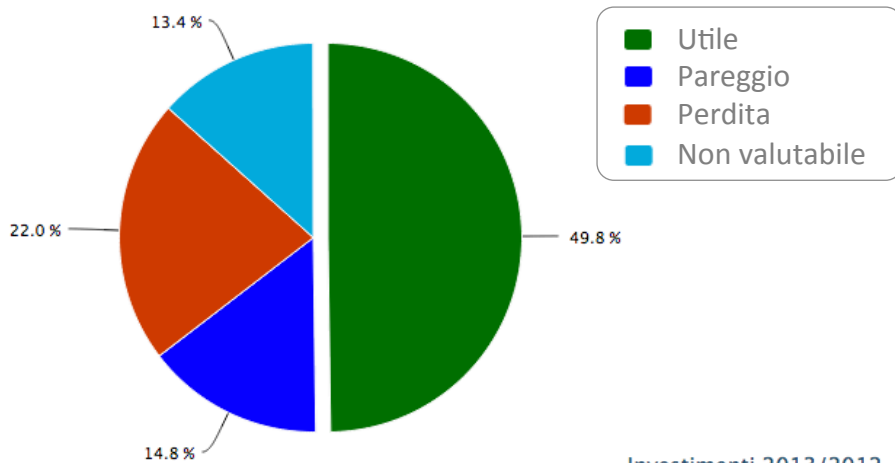
Indebitamento 2013/2012  
SERVIZI



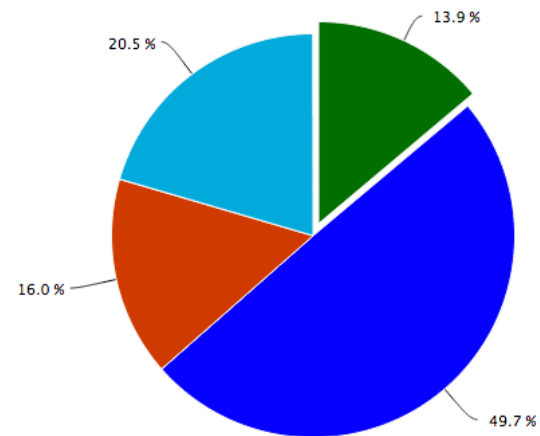


# Consuntivo 2013 - dettaglio

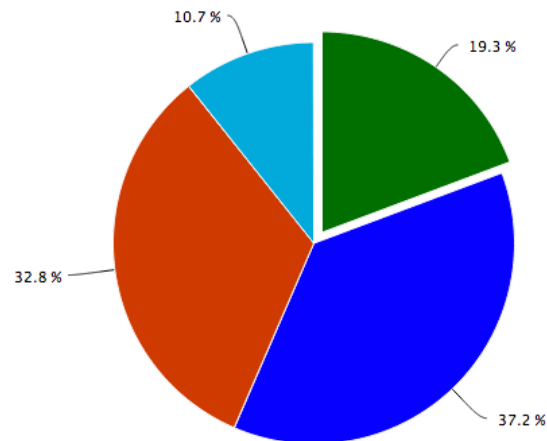
Risultato Economico 2013/2012  
INDUSTRIA



Risultato Economico 2013/2012  
SERVIZI



Investimenti 2013/2012  
INDUSTRIA



Investimenti 2013/2012  
SERVIZI

