



CONFINDUSTRIA
Piemonte

Indagine Congiunturale

III trimestre 2014

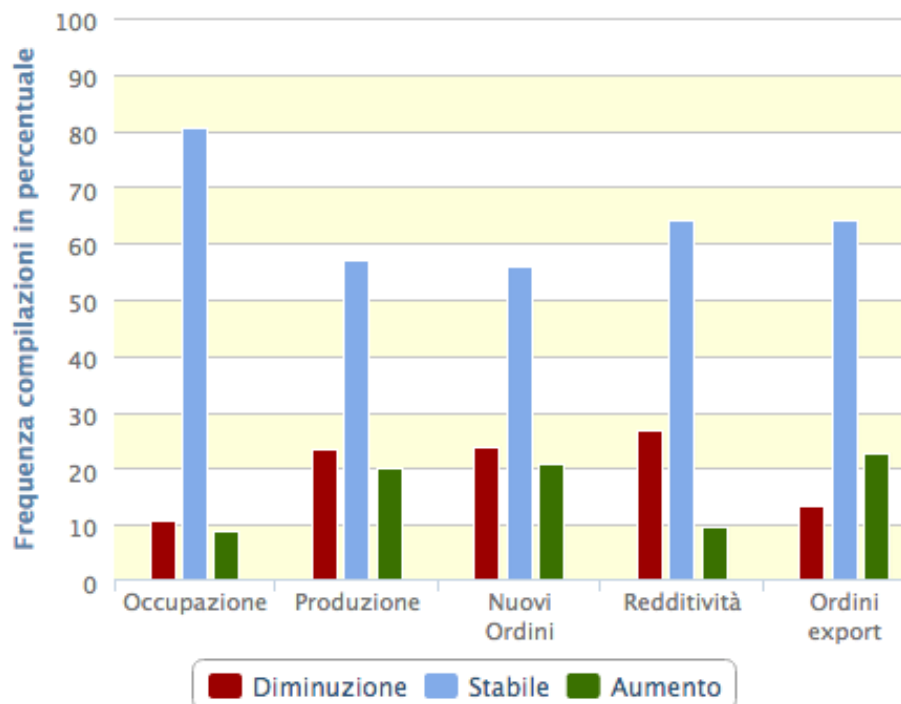




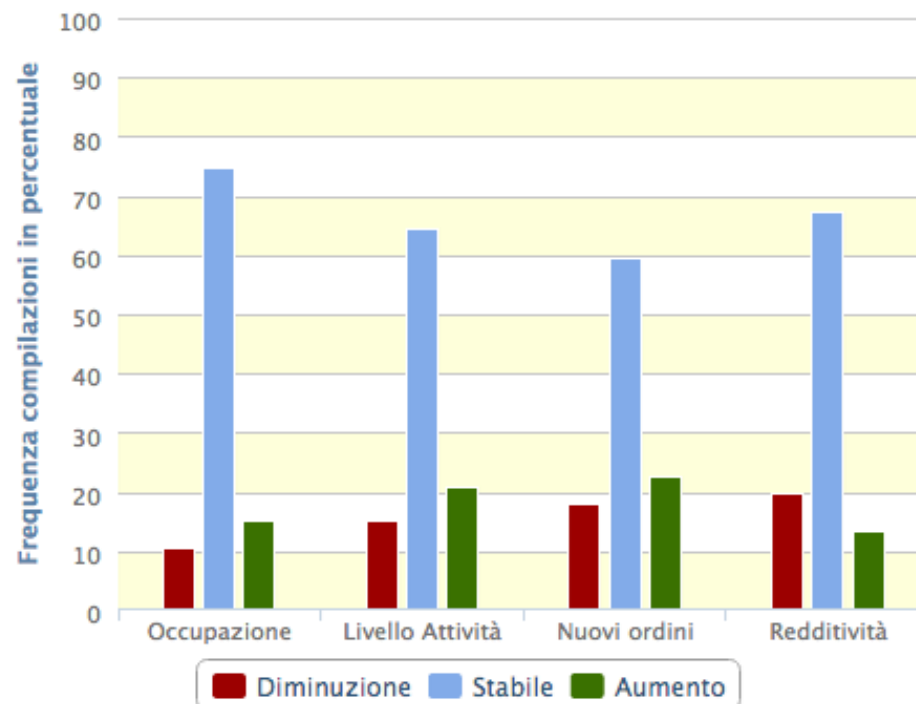
Previsioni

Campione dei rispondenti	
INDUSTRIA	SERVIZI
863	250

Previsioni trimestrali
PIEMONTE - INDUSTRIA



Previsioni trimestrali
PIEMONTE - SERVIZI





Previsioni - saldo

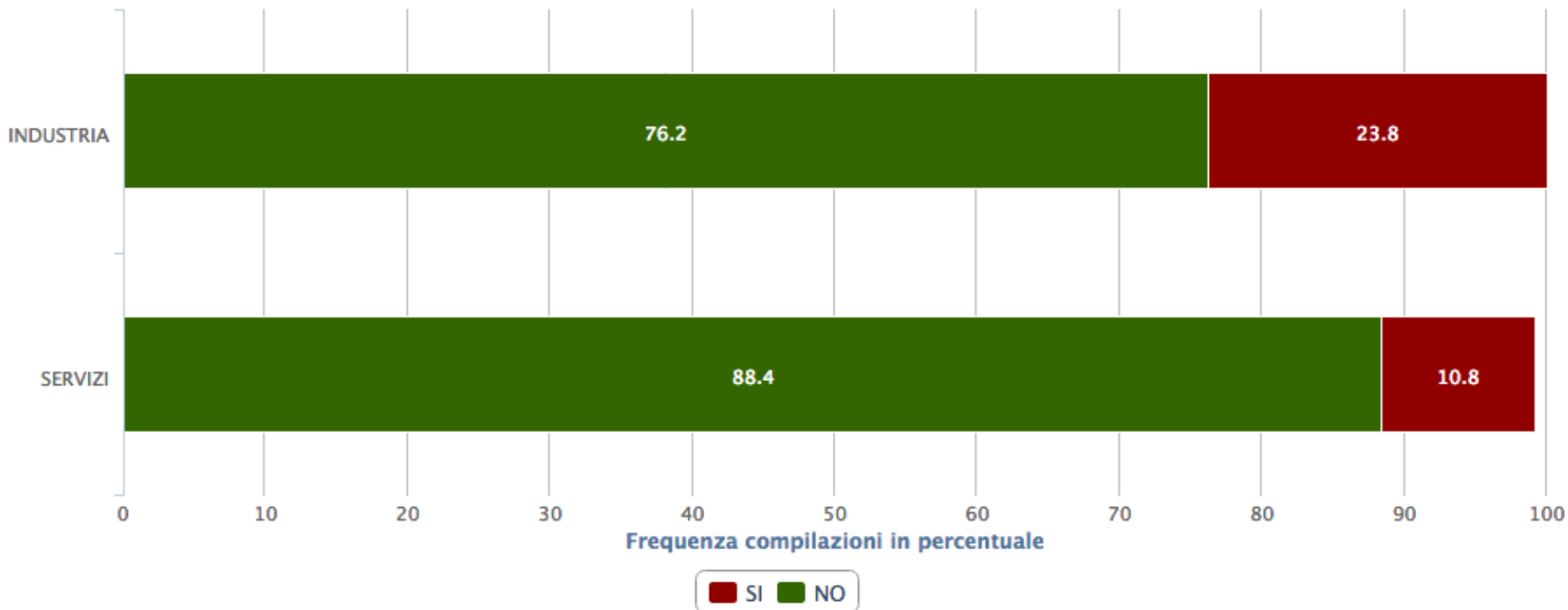
		INDUSTRIA		SERVIZI	
	Occupazione	+2,6%		-2,3%	
	Produzione	-1,4%		+2,0%	
	Nuovi Ordini	-0,1%		+2,8%	
	Redditività	+2,4%		+9,2%	
	Ordini Export	-0,5%			





Cassa integrazione

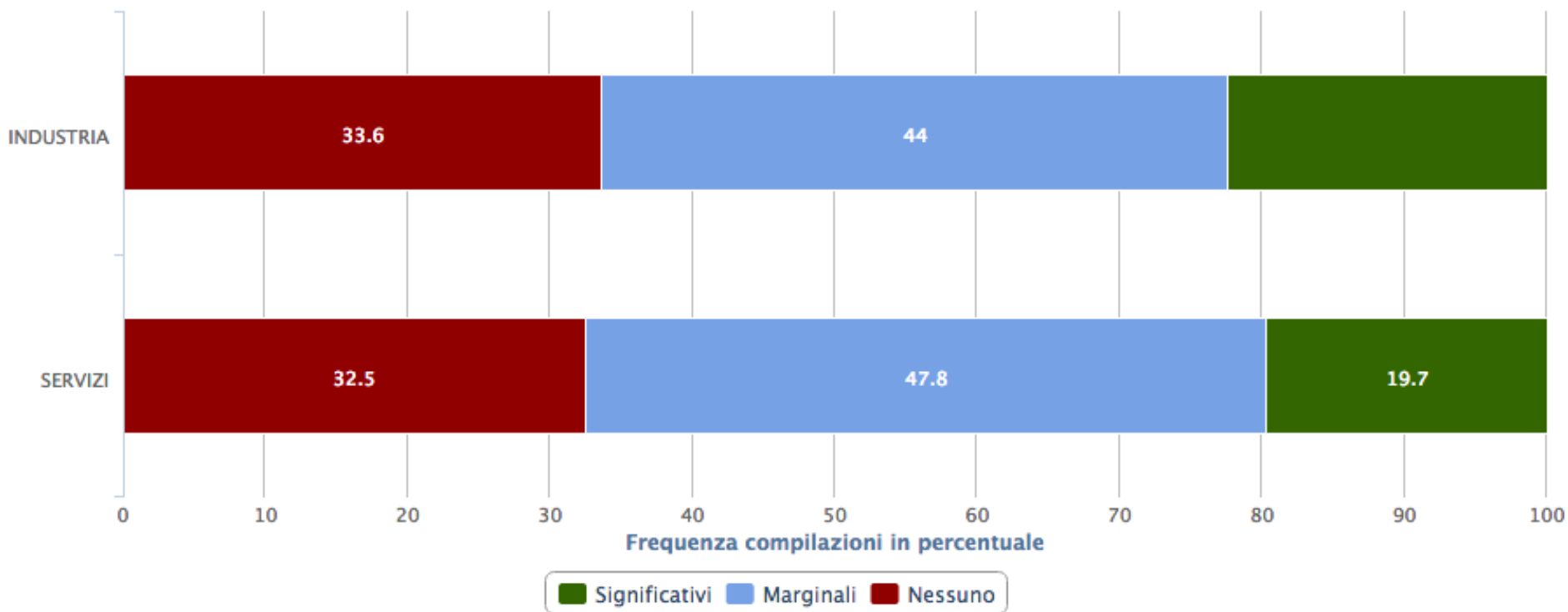
Previsioni ricorso cassa integrazione





Investimenti programmati

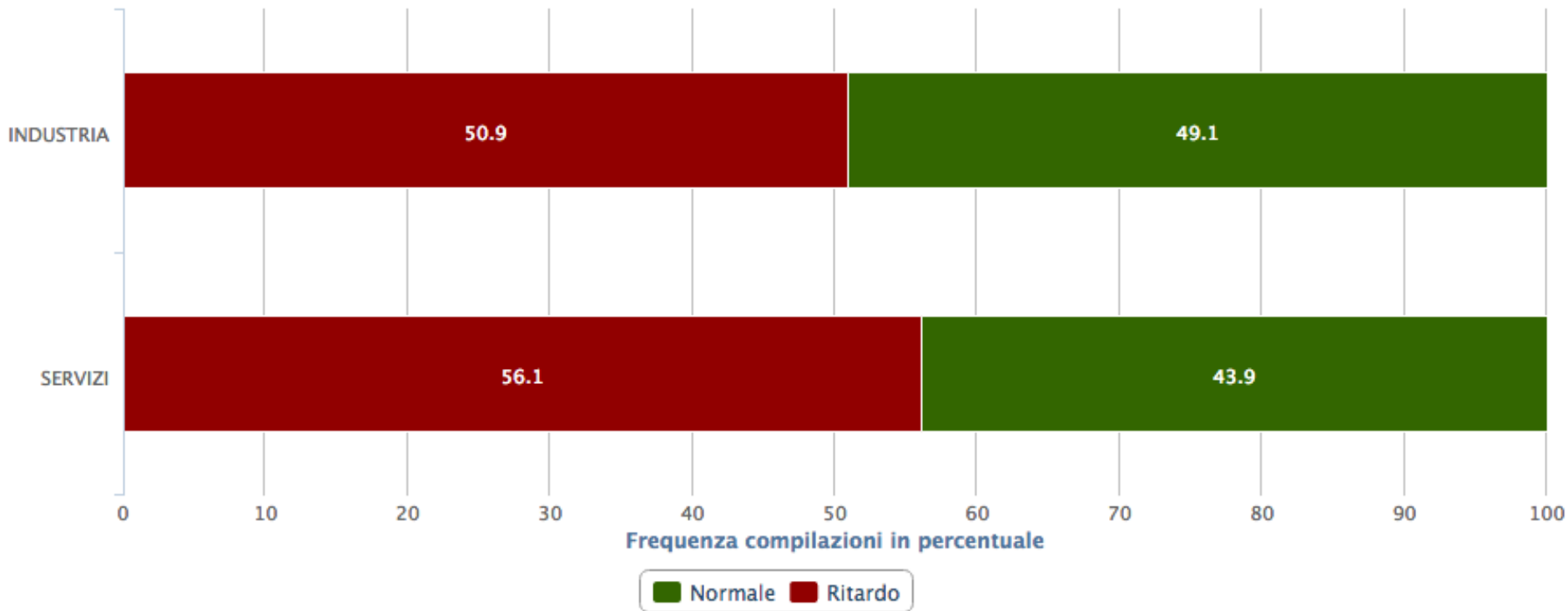
Investimenti programmati





Andamento incassi

Andamento degli incassi



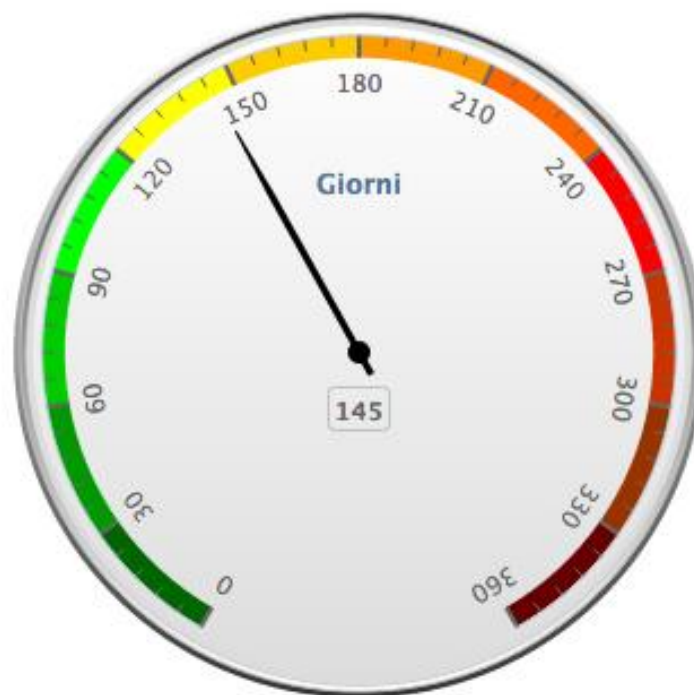


Media pagamenti - Industria

Media pagamenti clienti
PIEMONTE - INDUSTRIA



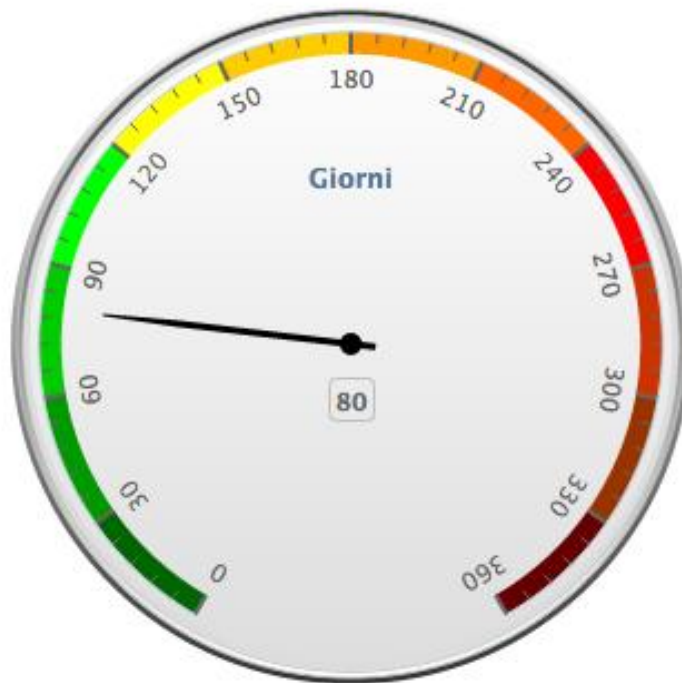
Media pagamenti P.A.
PIEMONTE - INDUSTRIA



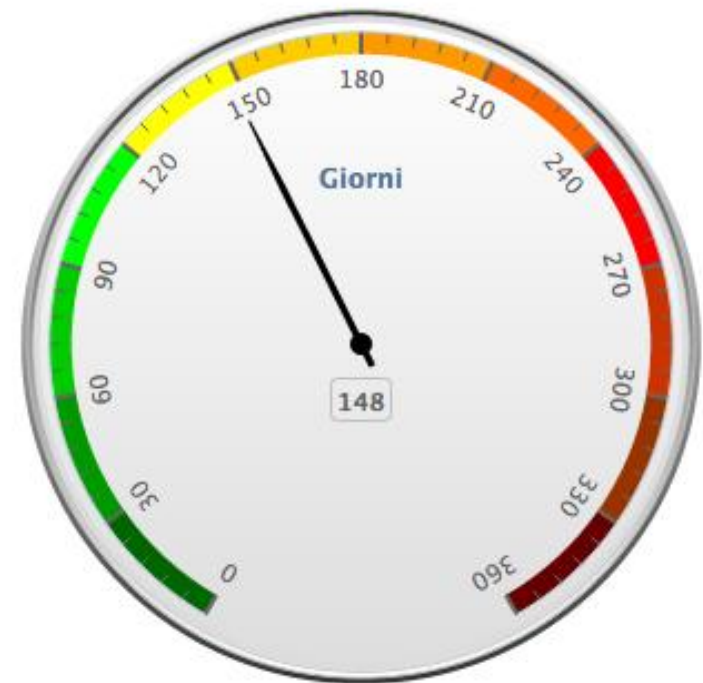


Media pagamenti - Servizi

Media pagamenti clienti
PIEMONTE - SERVIZI



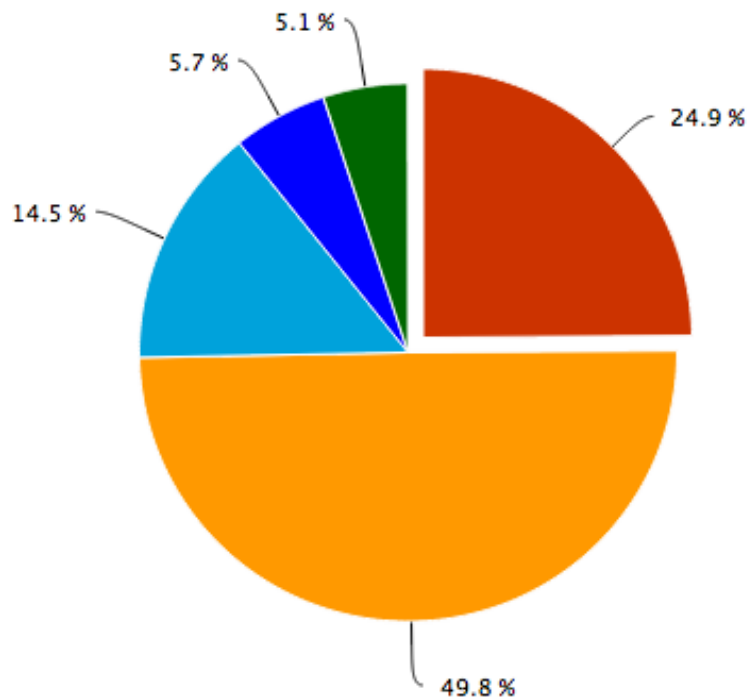
Media pagamenti P.A.
PIEMONTE - SERVIZI





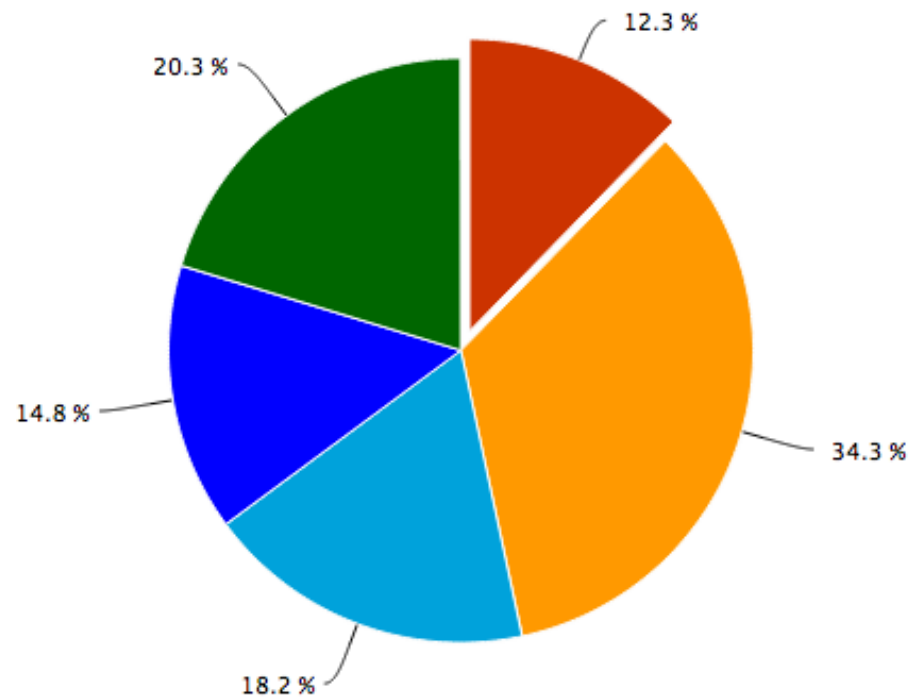
Carnet ordini

Carnet Ordini
PIEMONTE - INDUSTRIA



Meno di 1 mese Da 1 a 3 mesi Da 3 a 6 mesi
Da 6 mesi a 1 anno Oltre 1 anno

Carnet Ordini
PIEMONTE - SERVIZI



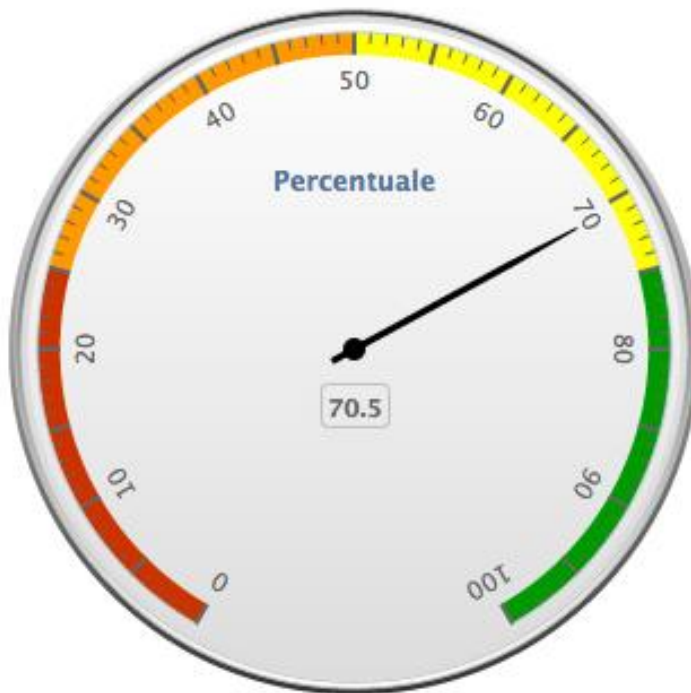
Meno di 1 mese Da 1 a 3 mesi Da 3 a 6 mesi
Da 6 mesi a 1 anno Oltre 1 anno





Utilizzo impianti/risorse

Utilizzo impianti
PIEMONTE - INDUSTRIA



Utilizzo risorse
PIEMONTE - SERVIZI

