



CONFINDUSTRIA
Piemonte

Indagine Congiunturale

III trimestre 2015

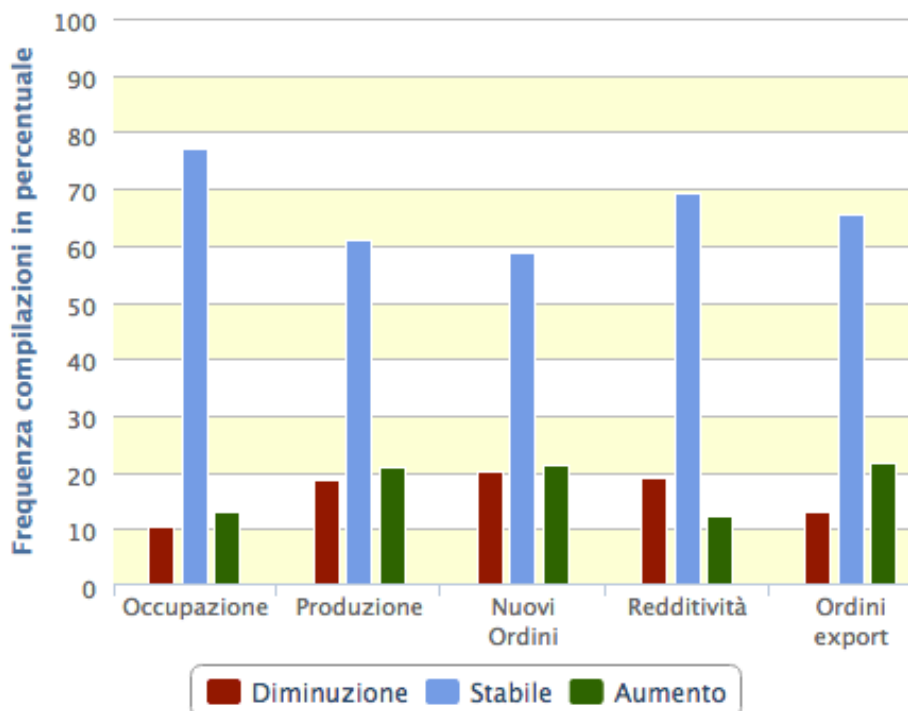




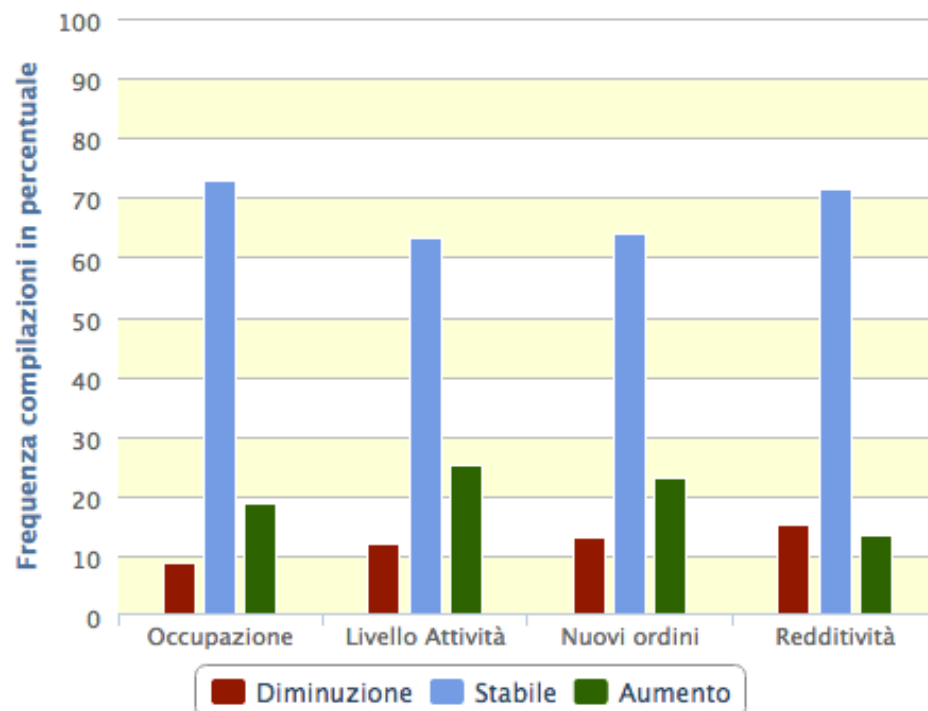
Previsioni

Campione dei rispondenti	
INDUSTRIA	SERVIZI
953	298

Previsioni trimestrali
PIEMONTE - INDUSTRIA



Previsioni trimestrali
PIEMONTE - SERVIZI





Previsioni - saldo

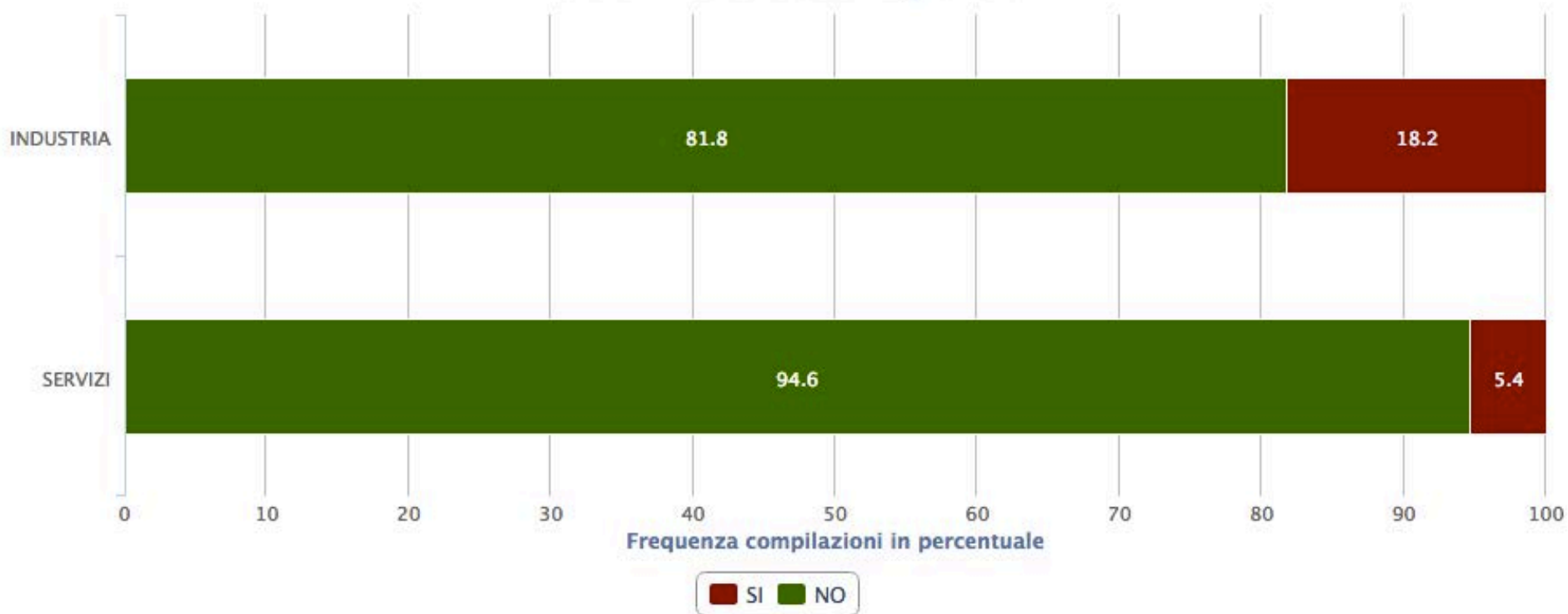
		INDUSTRIA		SERVIZI	
	Occupazione	-1,2%		-8,5%	
	Produzione	-7,4%		-3,3%	
	Nuovi Ordini	-7,1%		-1,7%	
	Redditività	+3,0%		+4,4%	
	Ordini Export	-3,3%			





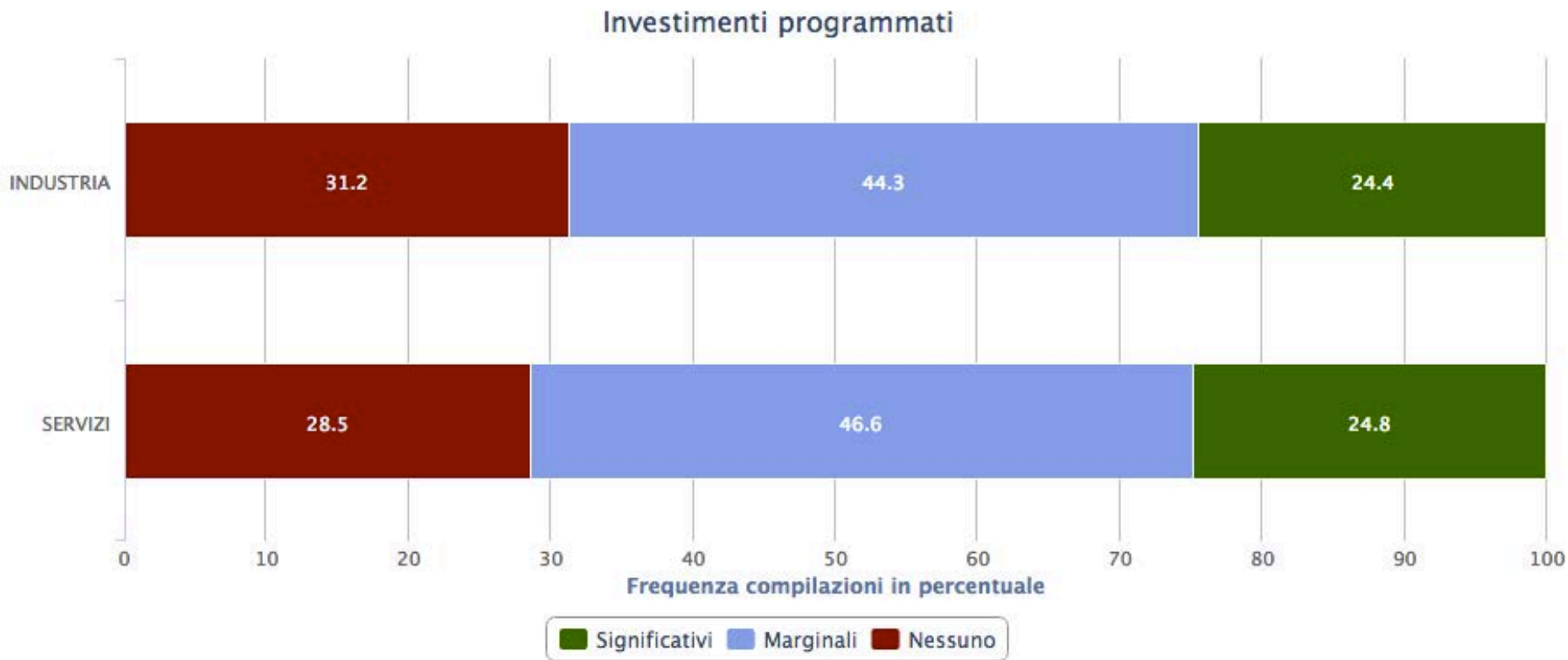
Cassa integrazione

Previsioni ricorso cassa integrazione



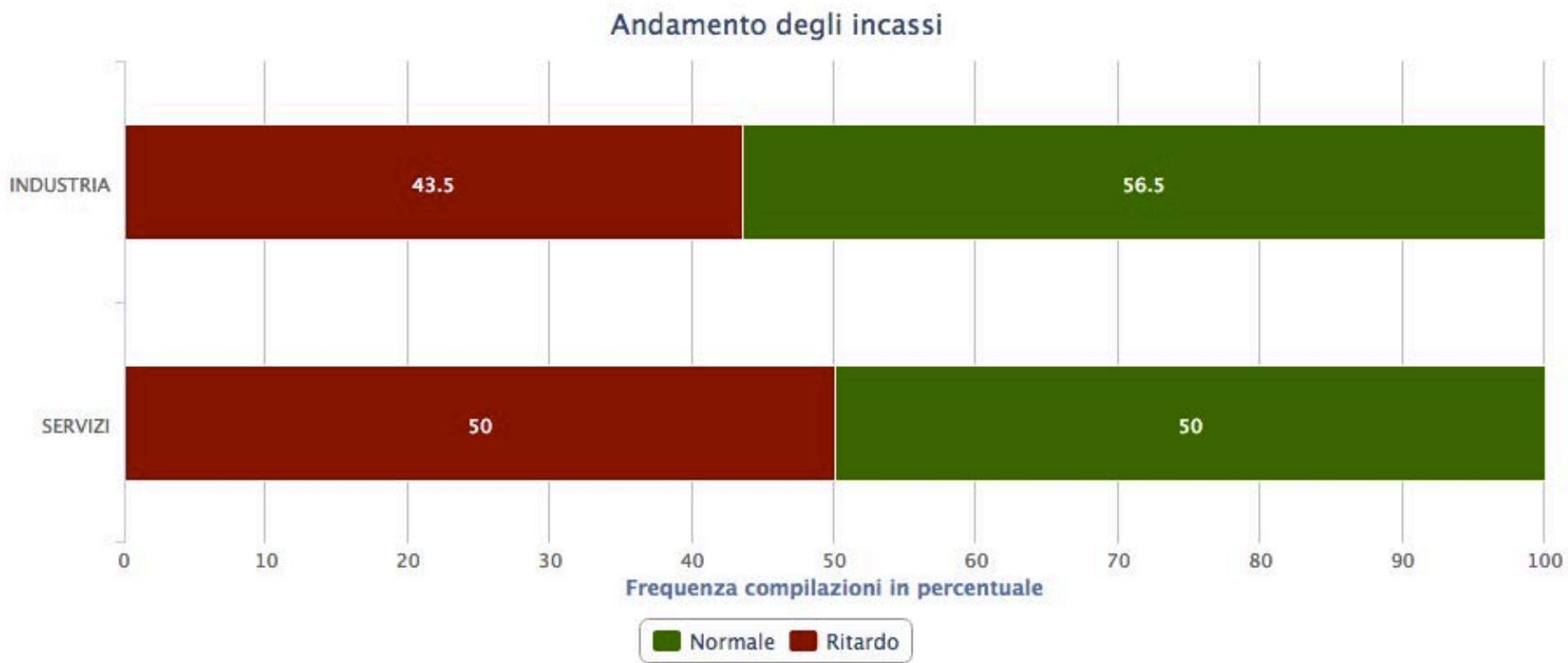


Investimenti programmati





Andamento incassi



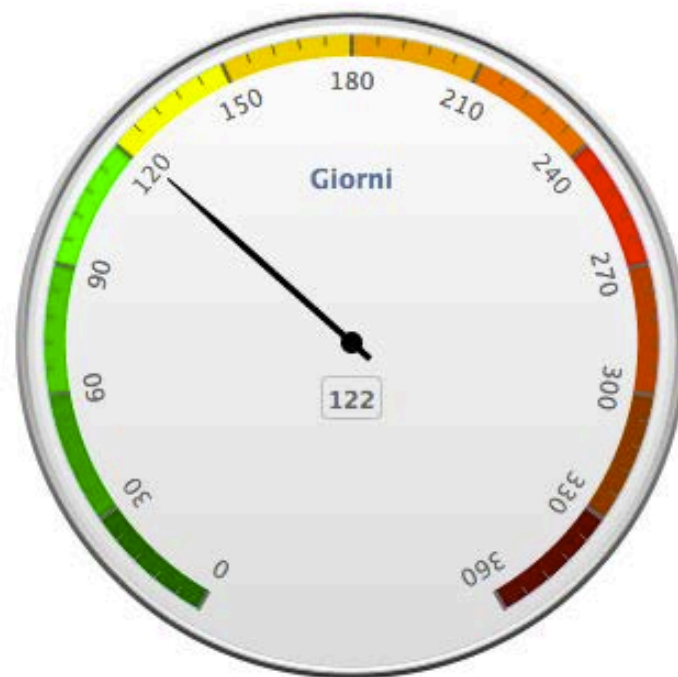


Media pagamenti - Industria

Media pagamenti clienti
PIEMONTE - INDUSTRIA



Media pagamenti P.A.
PIEMONTE - INDUSTRIA





Media pagamenti - Servizi

Media pagamenti clienti
PIEMONTE - SERVIZI

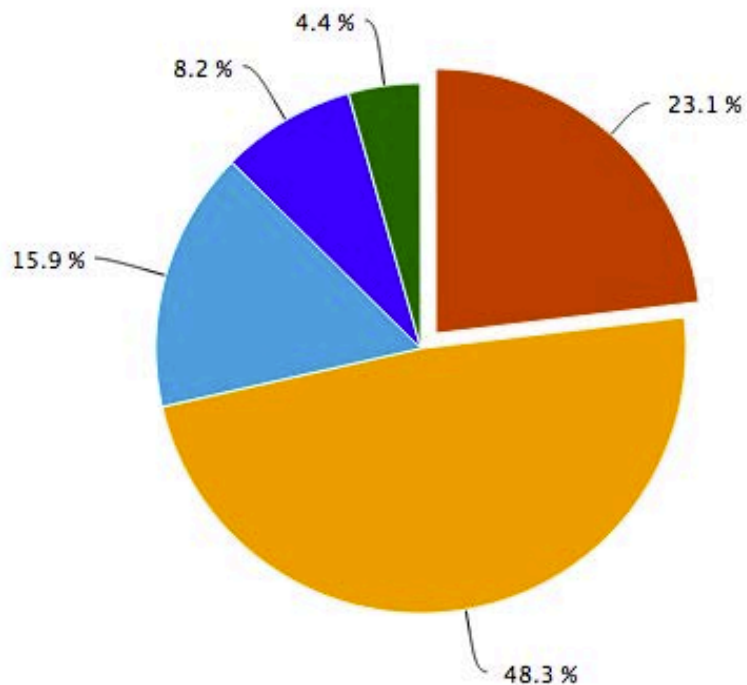
Media pagamenti P.A.
PIEMONTE - SERVIZI



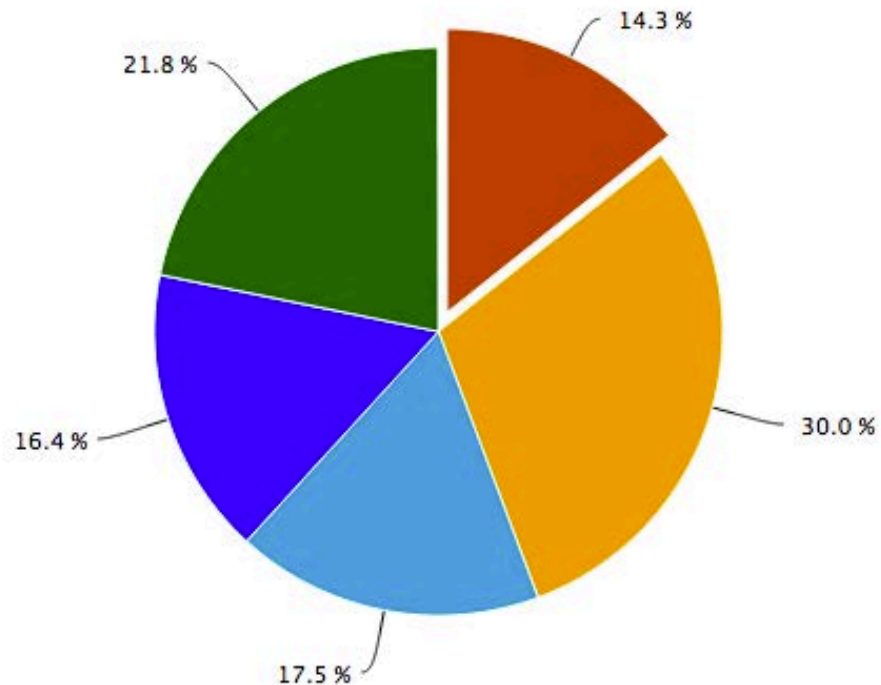


Carnet ordini

Carnet Ordini
PIEMONTE - INDUSTRIA



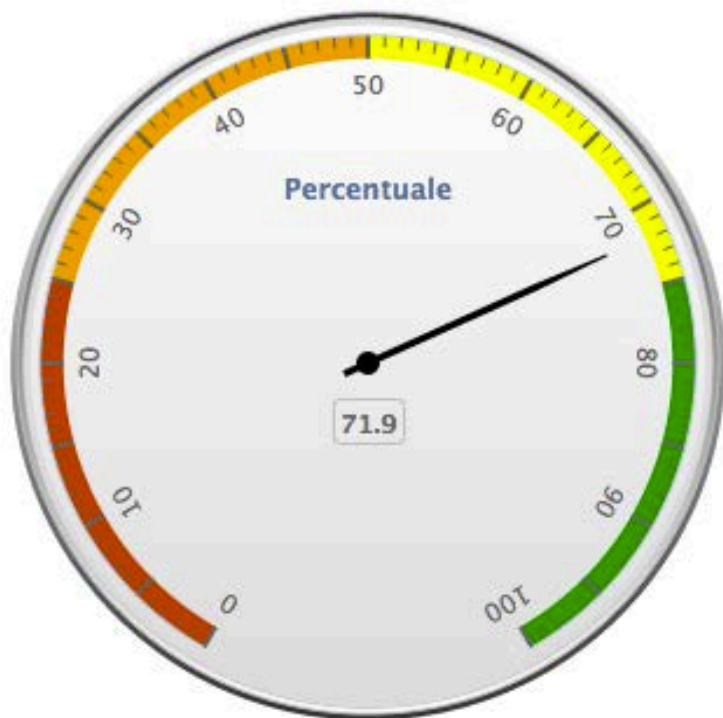
Carnet Ordini
PIEMONTE - SERVIZI





Utilizzo impianti/risorse

Utilizzo impianti
PIEMONTE - INDUSTRIA



Utilizzo risorse
PIEMONTE - SERVIZI

