



CONFINDUSTRIA
Piemonte

Indagine Congiunturale

IV trimestre 2015

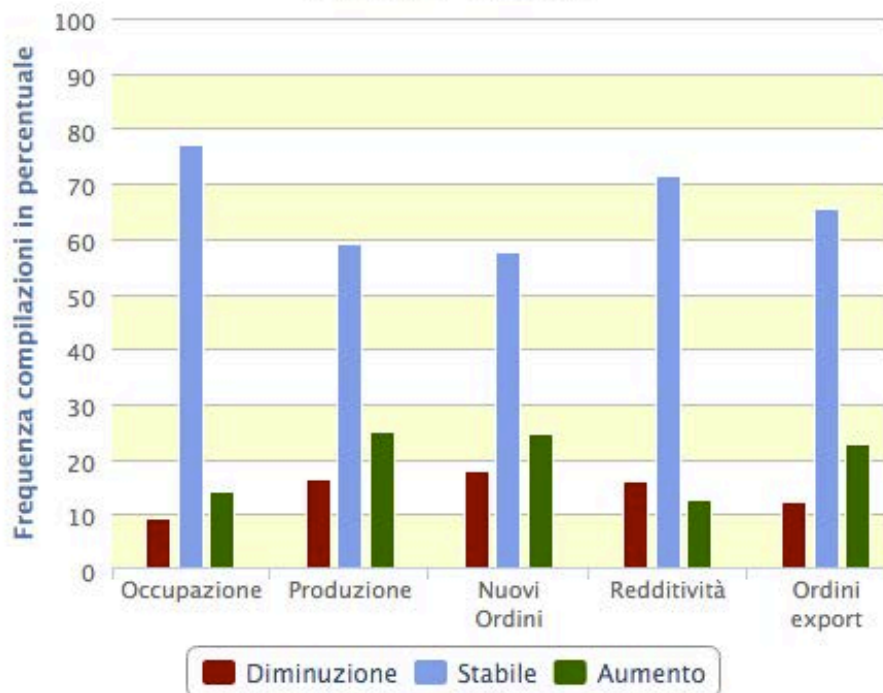




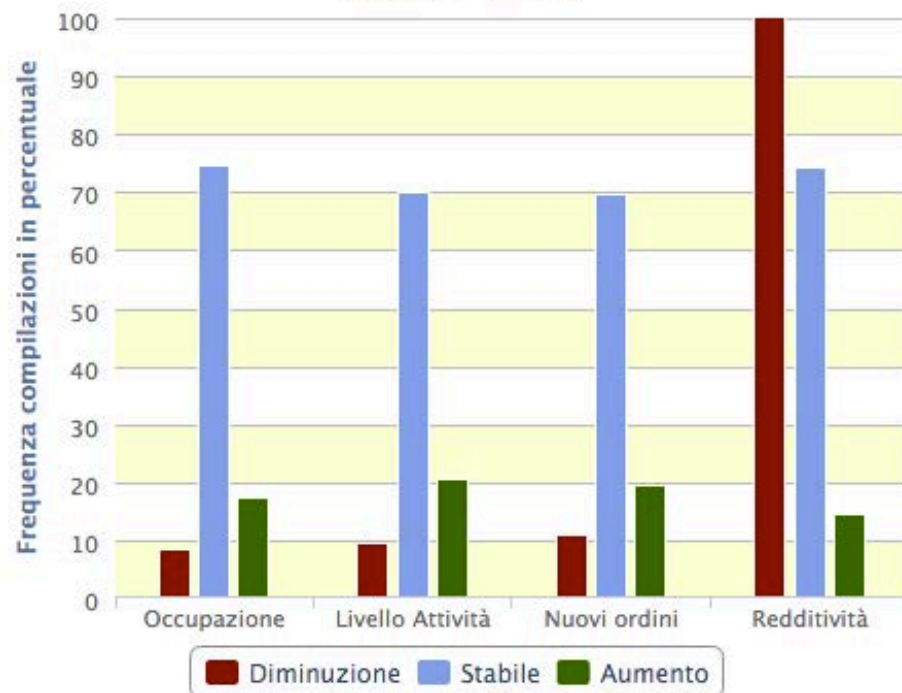
Previsioni

Campione dei rispondenti	
INDUSTRIA	SERVIZI
934	299

Previsioni trimestrali
PIEMONTE - INDUSTRIA



Previsioni trimestrali
PIEMONTE - SERVIZI





Previsioni - saldo

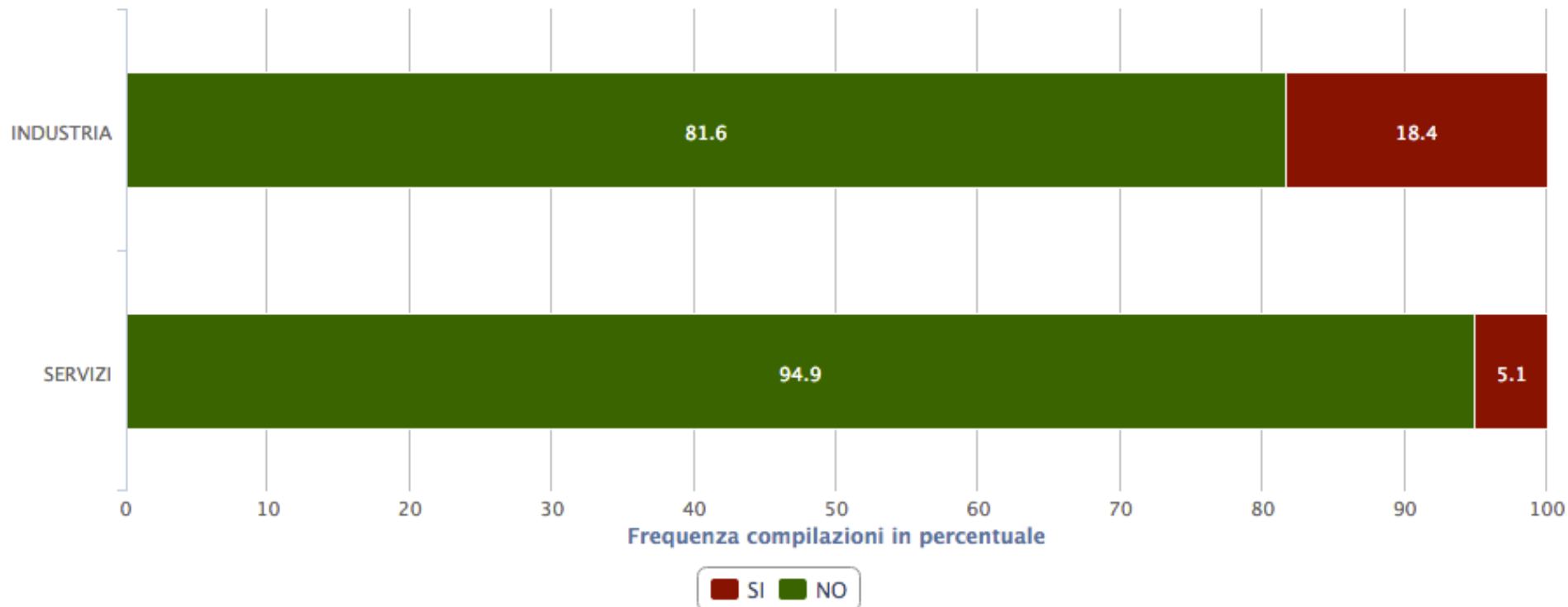
		INDUSTRIA		SERVIZI	
	Occupazione	+2,2%		-1,0%	
	Produzione	+6,7%		-2,1%	
	Nuovi Ordini	+5,6%		-1,7%	
	Redditività	+3,9%		+4,4%	
	Ordini Export	+1,4%			





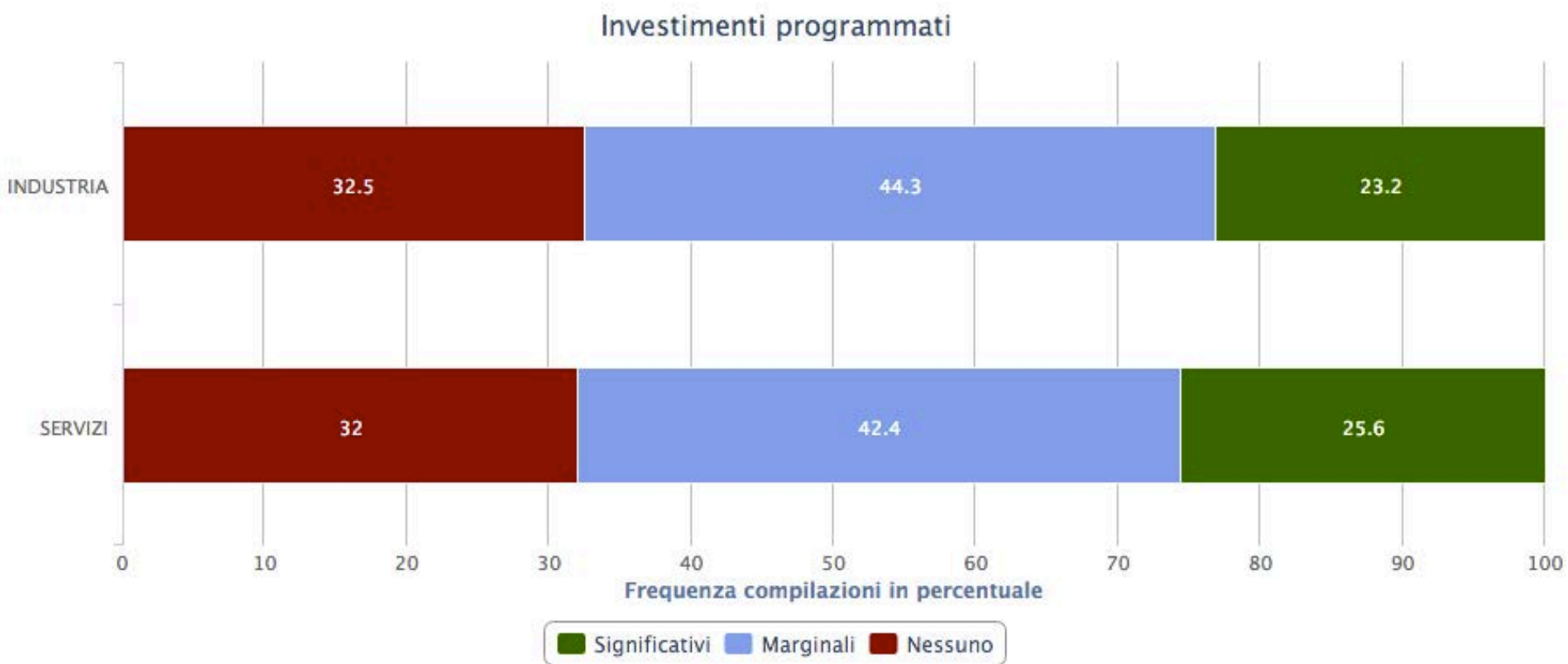
Cassa integrazione

Previsioni ricorso cassa integrazione



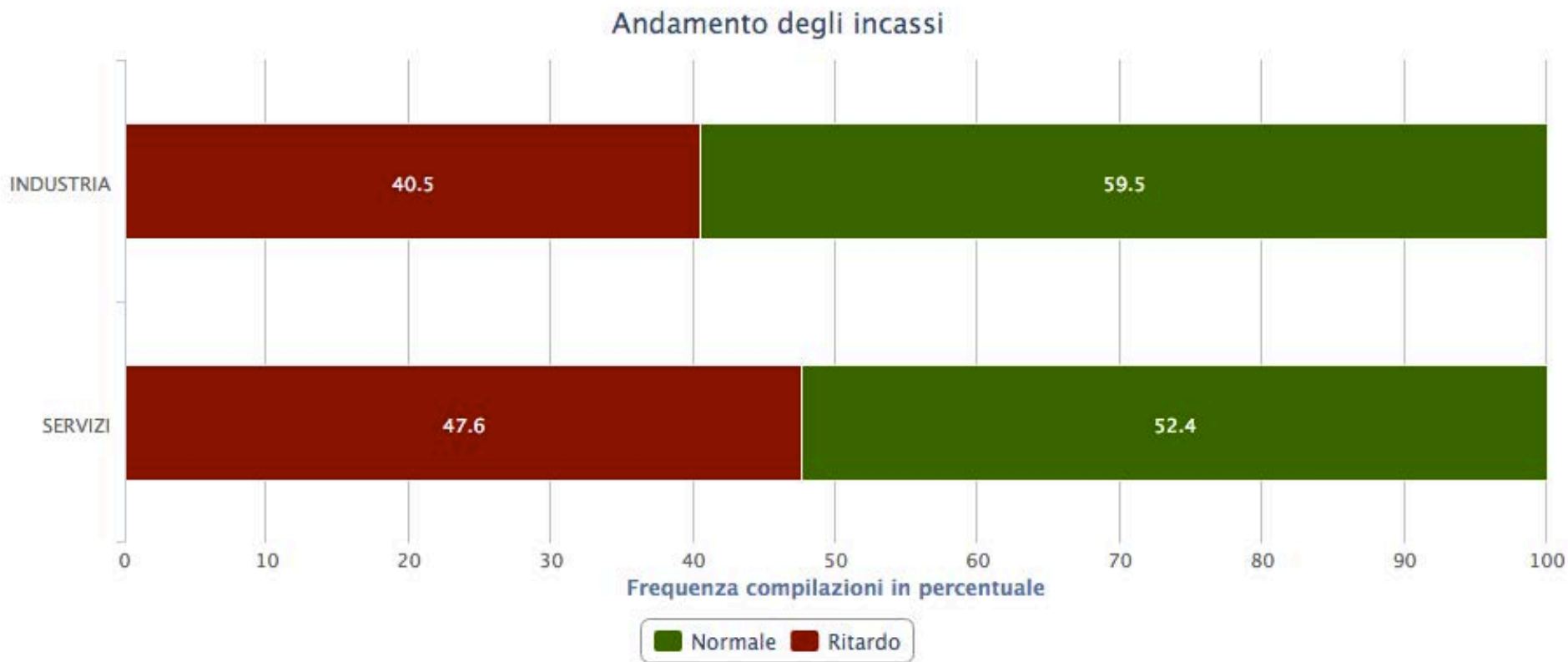


Investimenti programmati





Andamento incassi



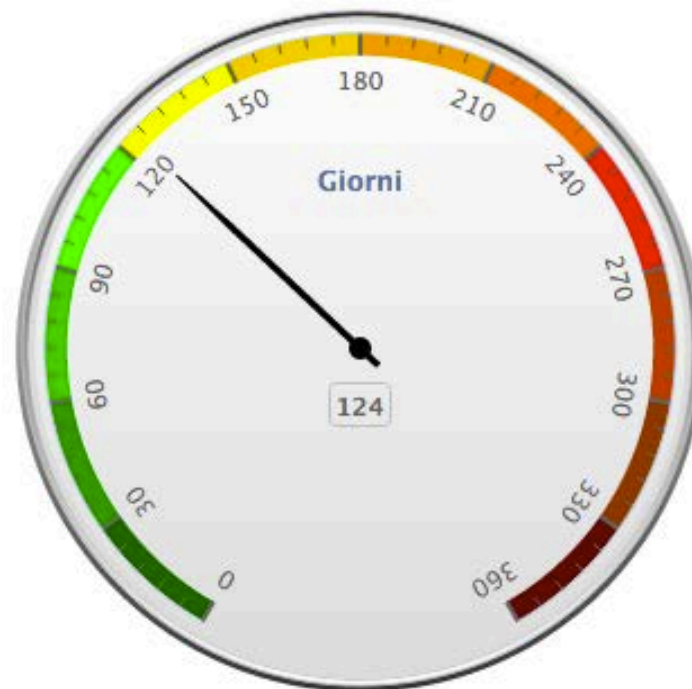


Media pagamenti - Industria

Media pagamenti clienti
PIEMONTE - INDUSTRIA



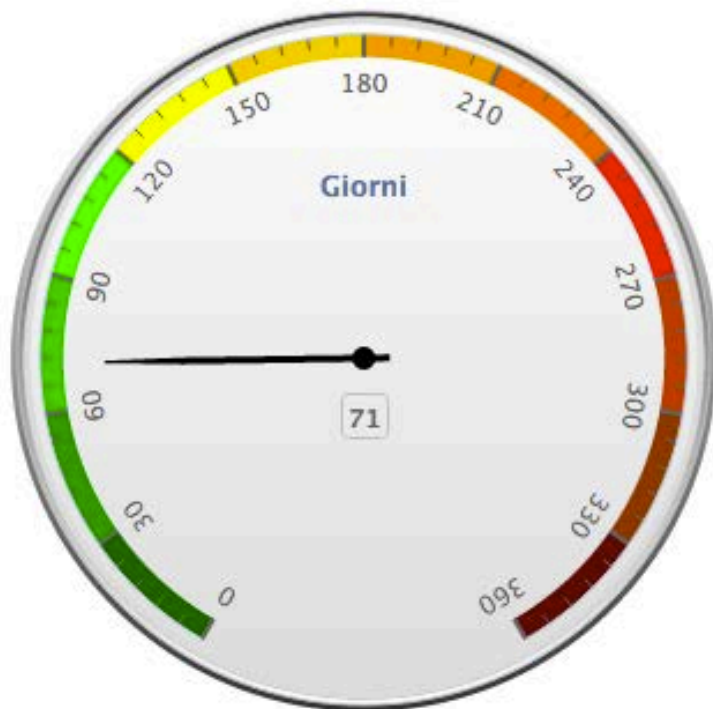
Media pagamenti P.A.
PIEMONTE - INDUSTRIA



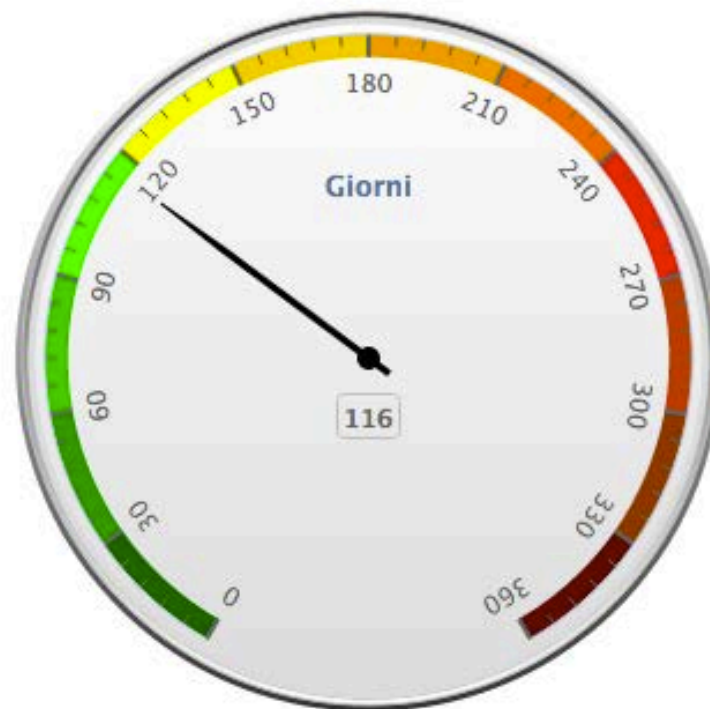


Media pagamenti - Servizi

Media pagamenti clienti
PIEMONTE - SERVIZI



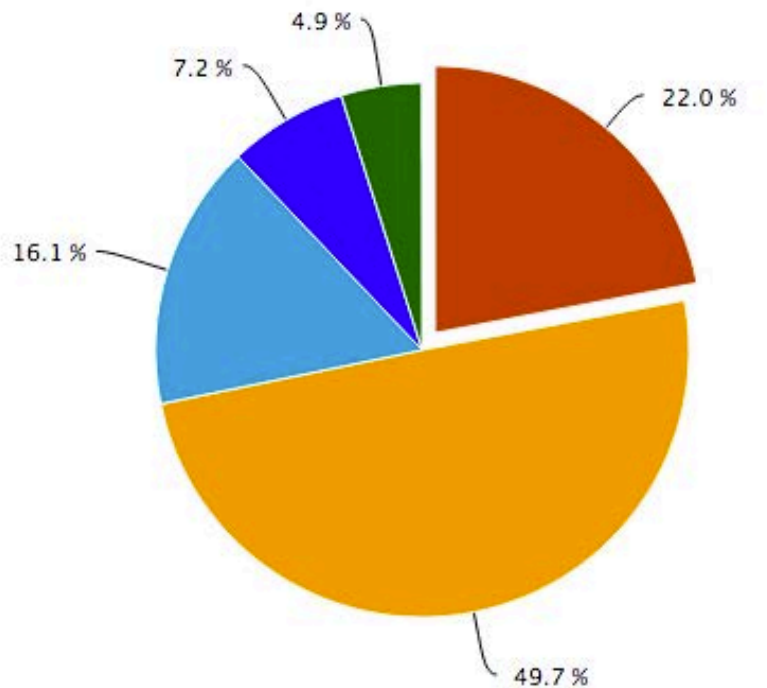
Media pagamenti P.A.
PIEMONTE - SERVIZI





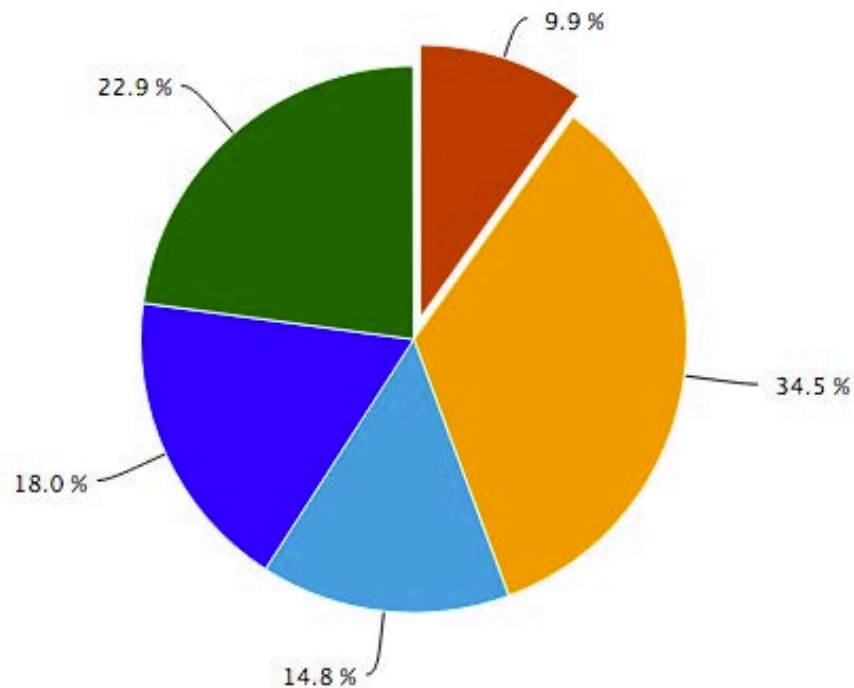
Carnet ordini

Carnet Ordini
PIEMONTE - INDUSTRIA



Meno di 1 mese Da 1 a 3 mesi Da 3 a 6 mesi
Da 6 mesi a 1 anno Oltre 1 anno

Carnet Ordini
PIEMONTE - SERVIZI



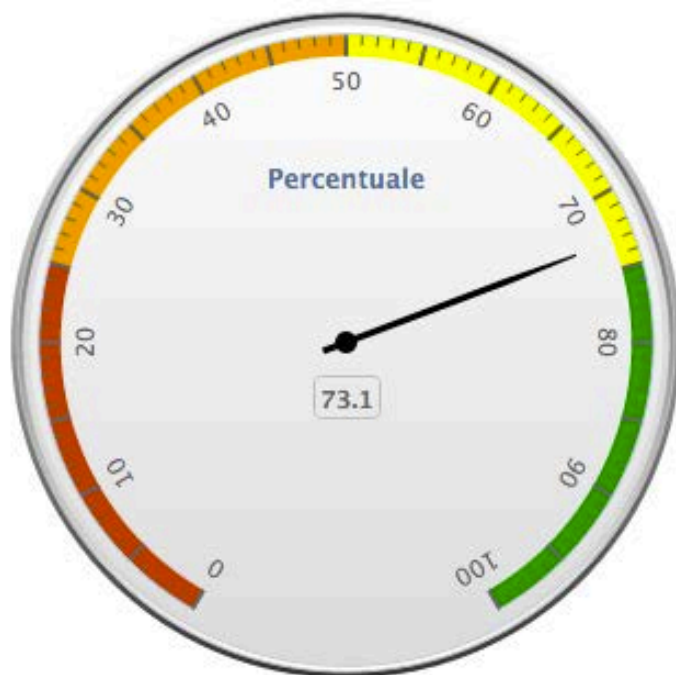
Meno di 1 mese Da 1 a 3 mesi Da 3 a 6 mesi
Da 6 mesi a 1 anno Oltre 1 anno





Utilizzo impianti/risorse

Utilizzo impianti
PIEMONTE - INDUSTRIA



Utilizzo risorse
PIEMONTE - SERVIZI

