



CONFINDUSTRIA  
Piemonte

# Indagine Congiunturale

## I trimestre 2017

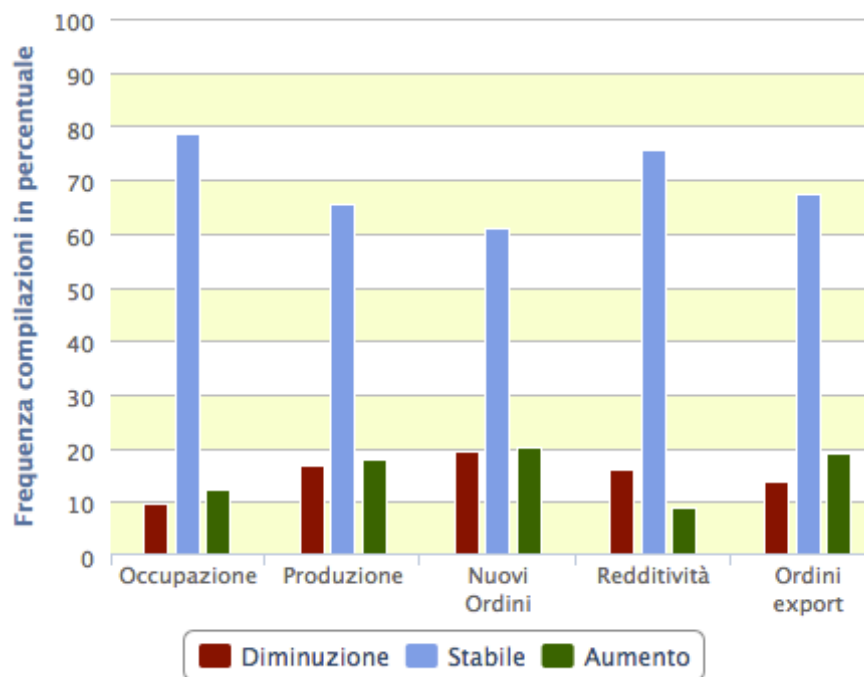




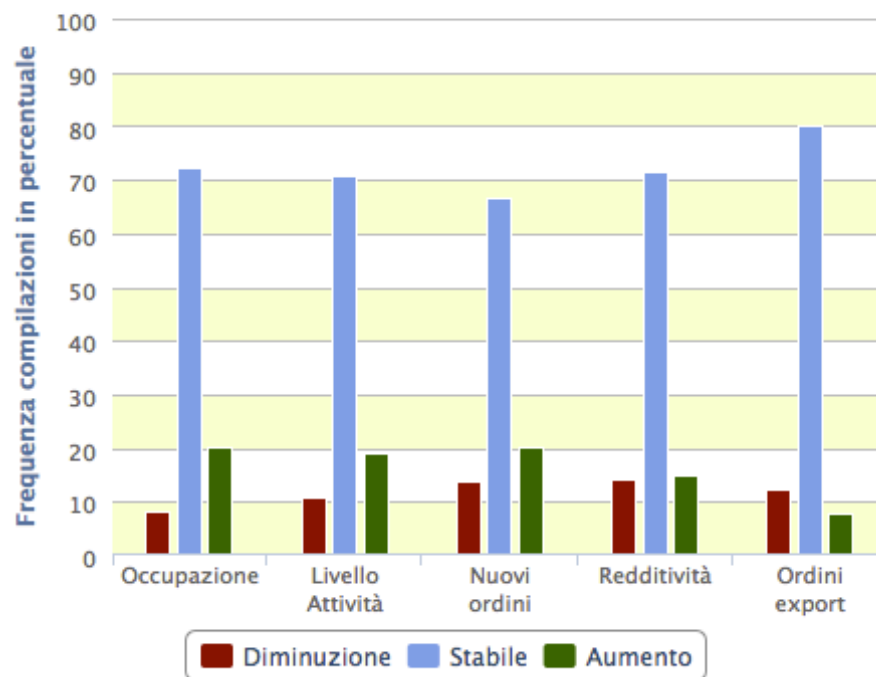
# Previsioni

| Campione dei rispondenti |         |
|--------------------------|---------|
| INDUSTRIA                | SERVIZI |
| 913                      | 290     |

Previsioni trimestrali  
PIEMONTE - INDUSTRIA



Previsioni trimestrali  
PIEMONTE - SERVIZI





# Previsioni - saldo

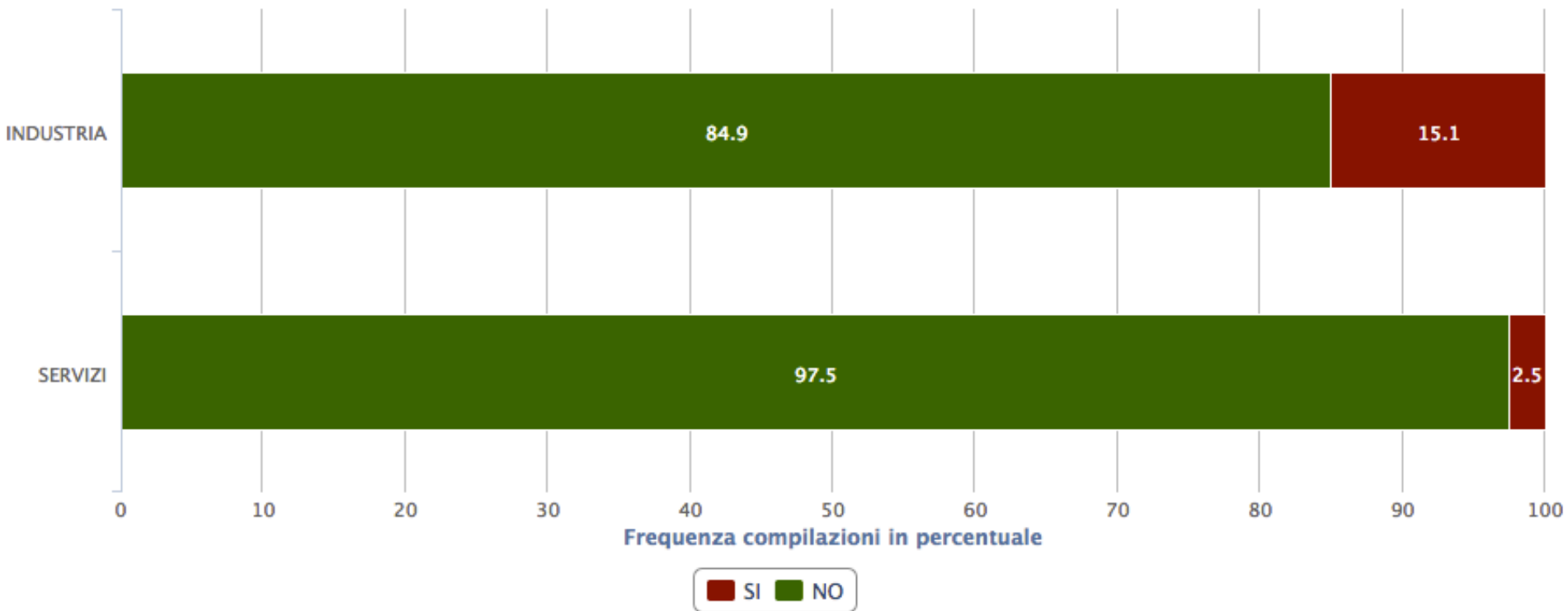
|   |               | INDUSTRIA |   | SERVIZI |   |
|---|---------------|-----------|---|---------|---|
|    | Occupazione   | +1,4%     |    | +3,8%   |    |
|    | Produzione    | -0,9%     |    | -5,5%   |    |
|    | Nuovi Ordini  | +1,9%     |    | -4,8%   |    |
|   | Redditività   | -1,0%     |   | +1,4%   |   |
|  | Ordini Export | +4,1%     |  | -2,5%   |  |





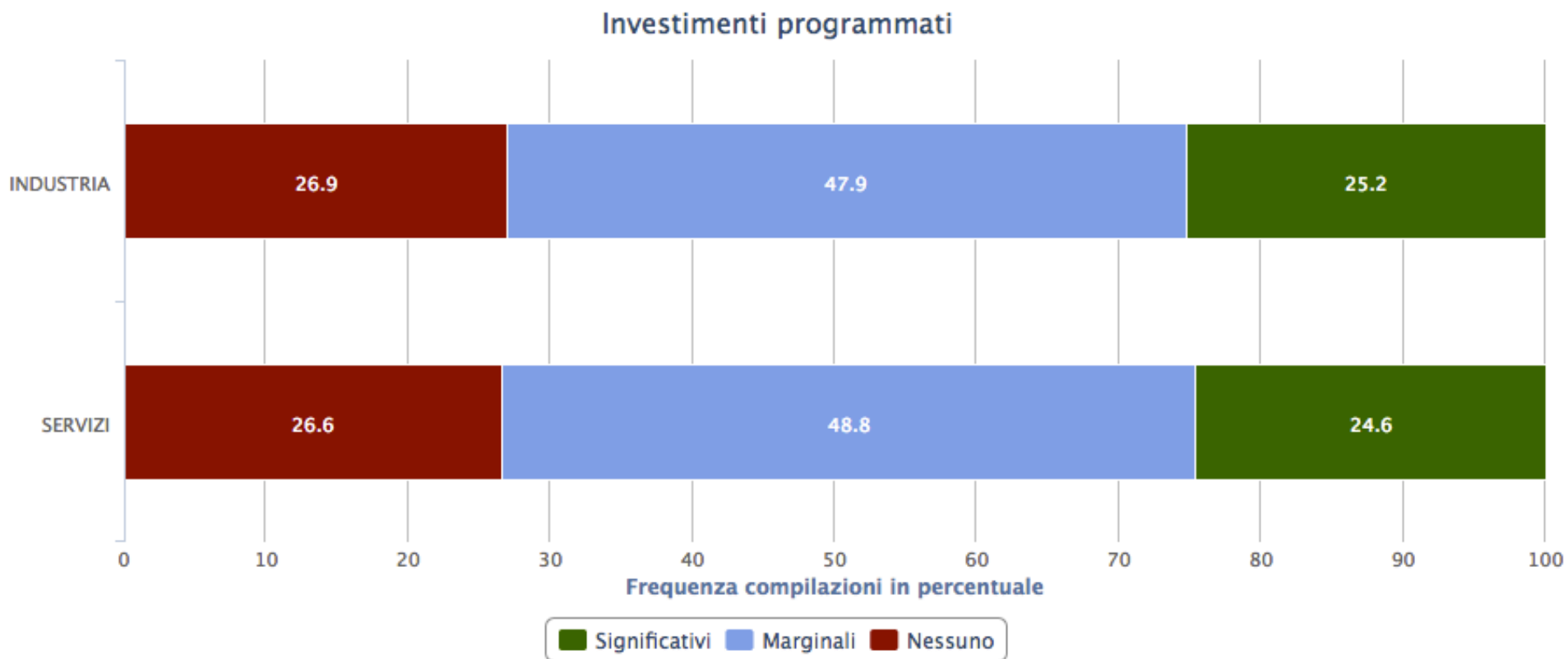
# Cassa integrazione

Previsioni ricorso cassa integrazione





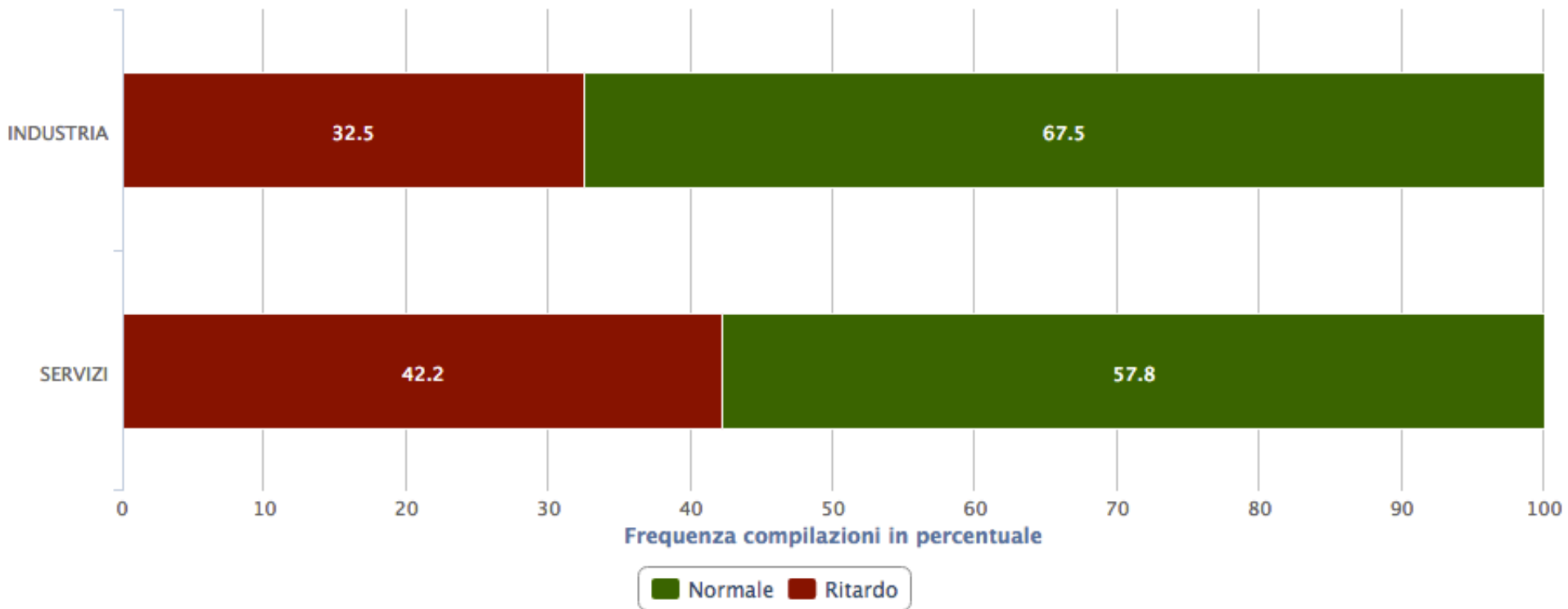
# Investimenti programmati





# Andamento incassi

Andamento degli incassi



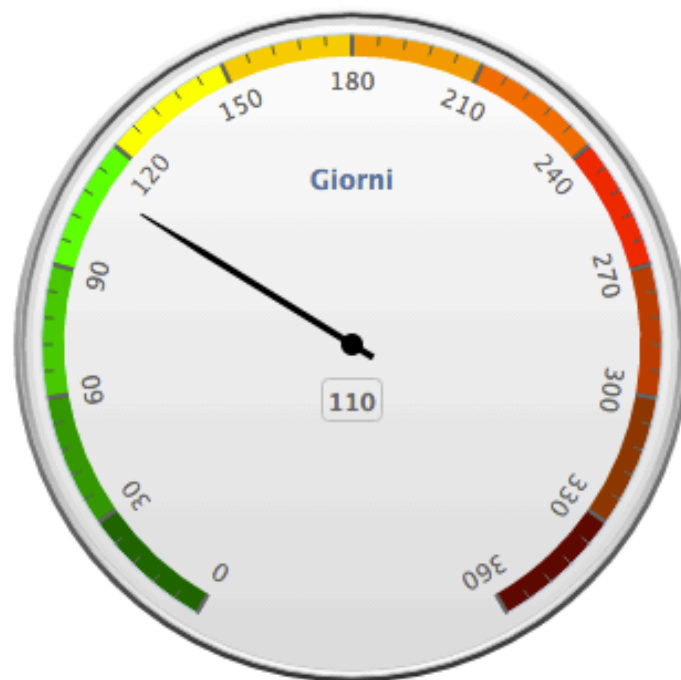


# Media pagamenti - Industria

Media pagamenti clienti  
PIEMONTE - INDUSTRIA



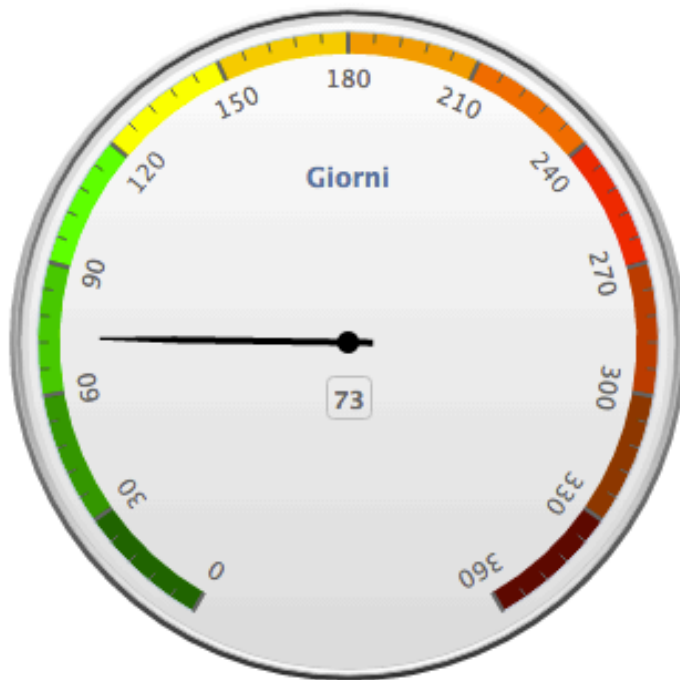
Media pagamenti P.A.  
PIEMONTE - INDUSTRIA



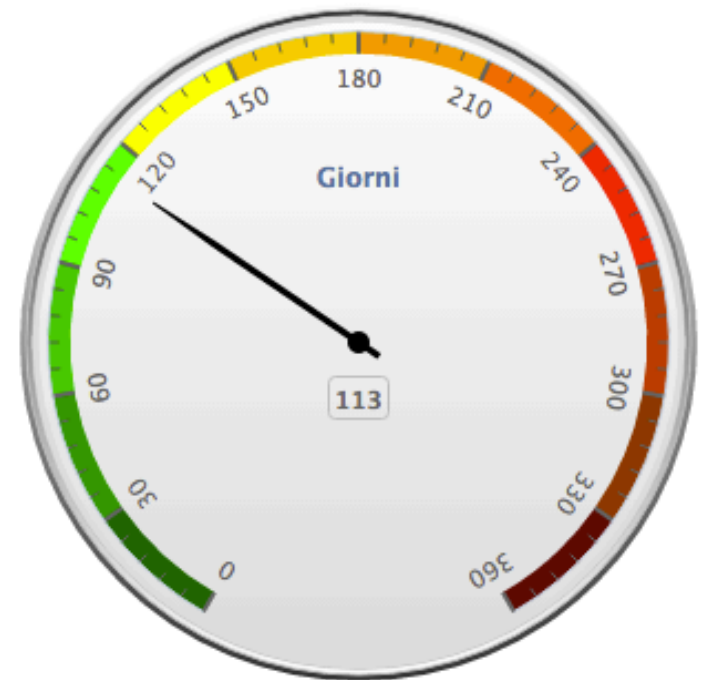


# Media pagamenti - Servizi

Media pagamenti clienti  
PIEMONTE - SERVIZI



Media pagamenti P.A.  
PIEMONTE - SERVIZI

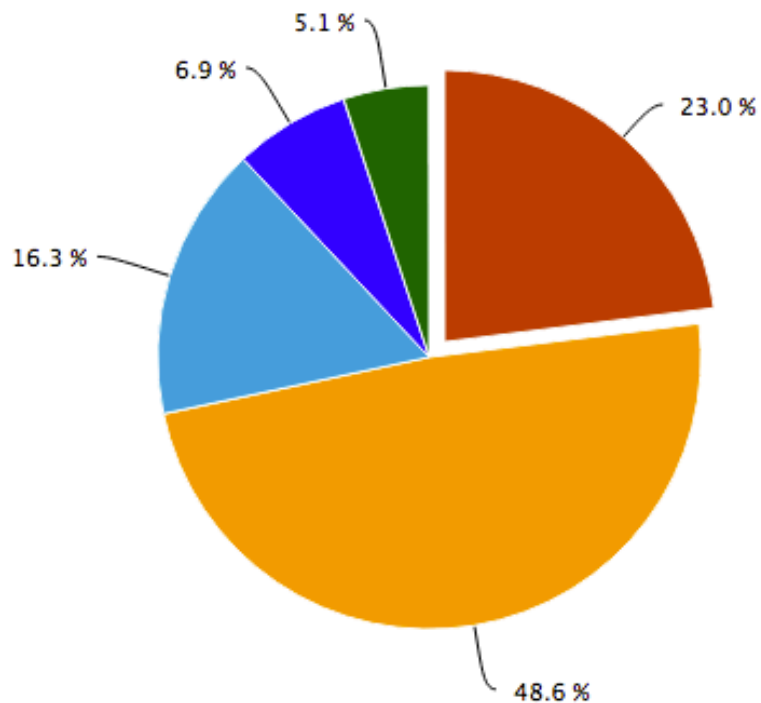






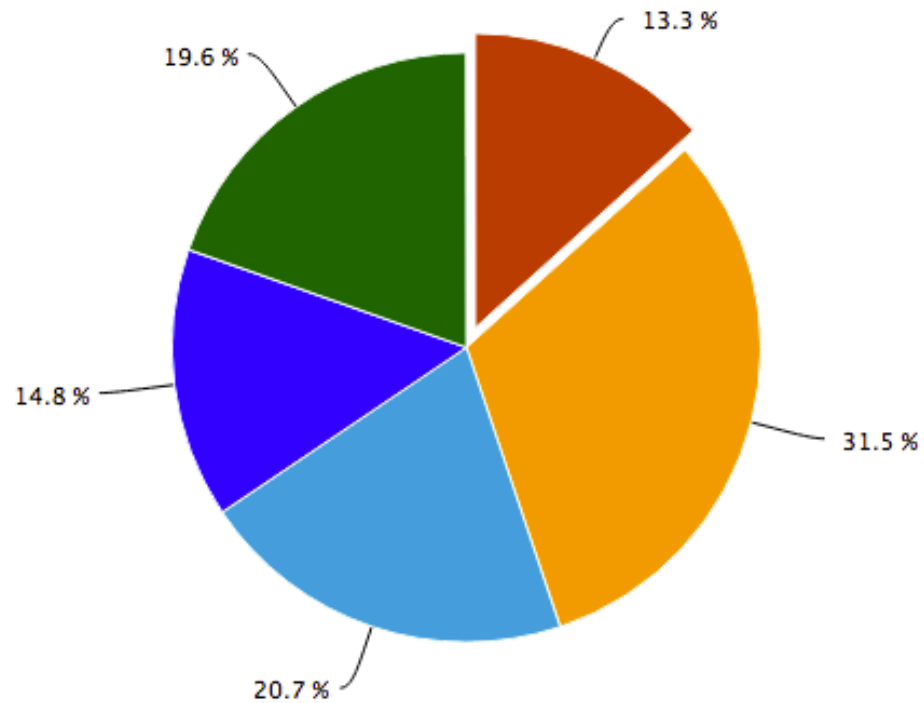
# Carnet ordini

Carnet Ordini  
PIEMONTE - INDUSTRIA



Meno di 1 mese Da 1 a 3 mesi Da 3 a 6 mesi  
Da 6 mesi a 1 anno Oltre 1 anno

Carnet Ordini  
PIEMONTE - SERVIZI



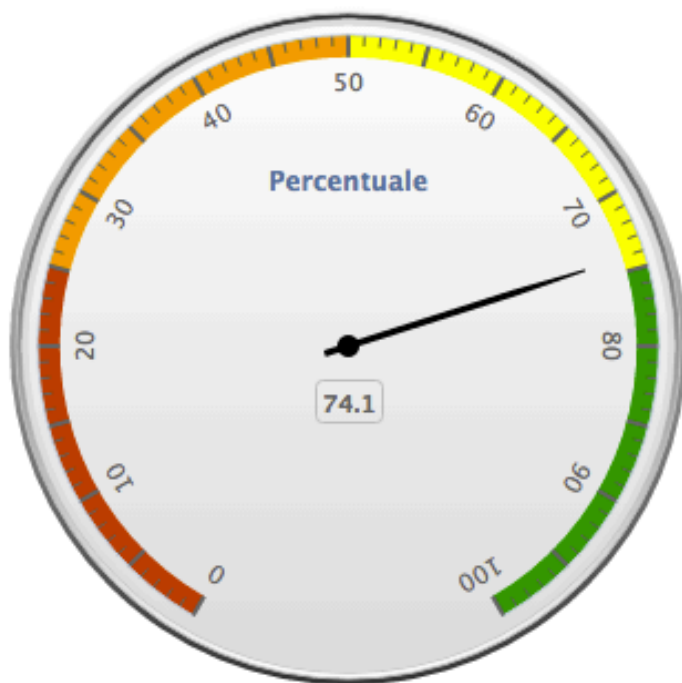
Meno di 1 mese Da 1 a 3 mesi Da 3 a 6 mesi  
Da 6 mesi a 1 anno Oltre 1 anno





# Utilizzo impianti/risorse

Utilizzo impianti  
PIEMONTE - INDUSTRIA



Utilizzo risorse  
PIEMONTE - SERVIZI

